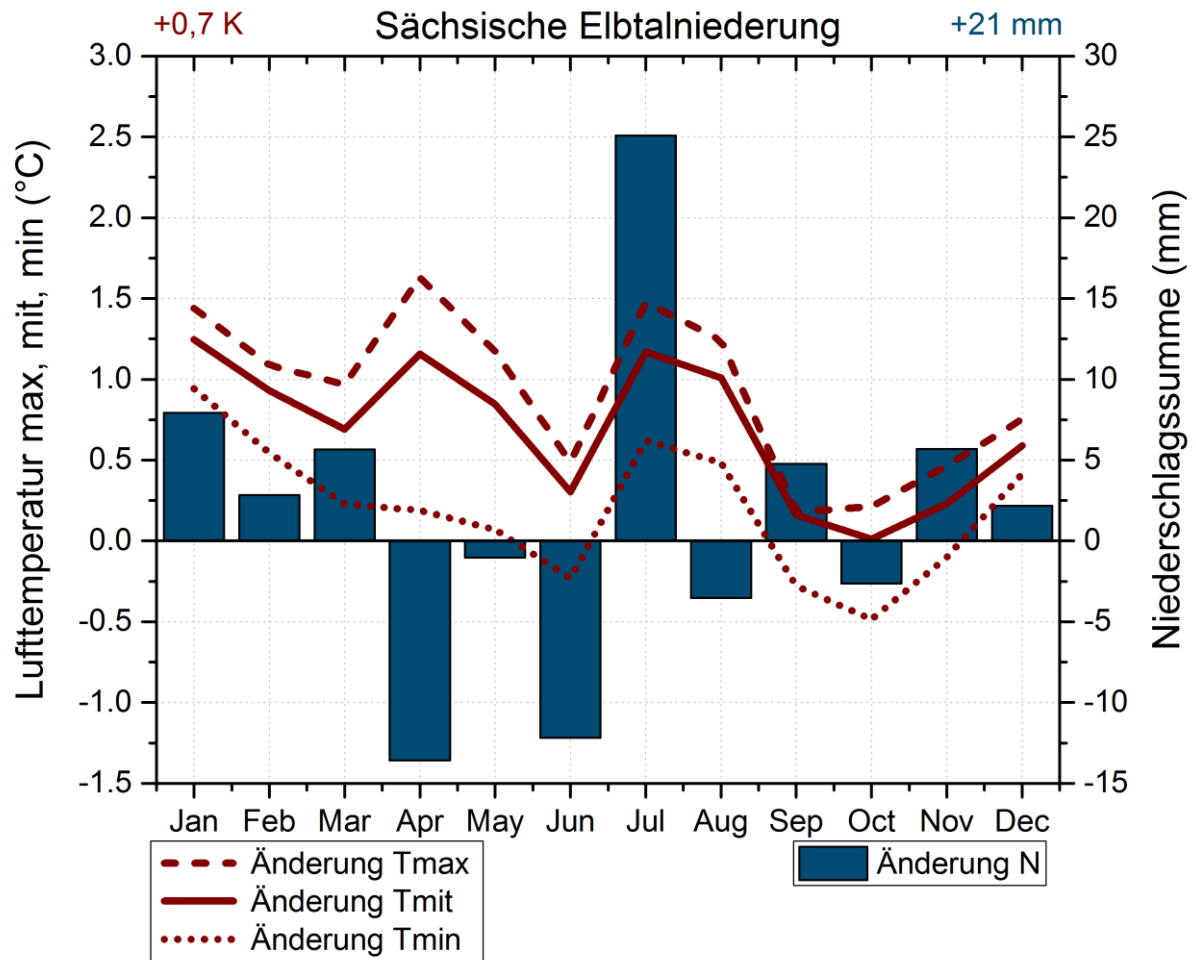
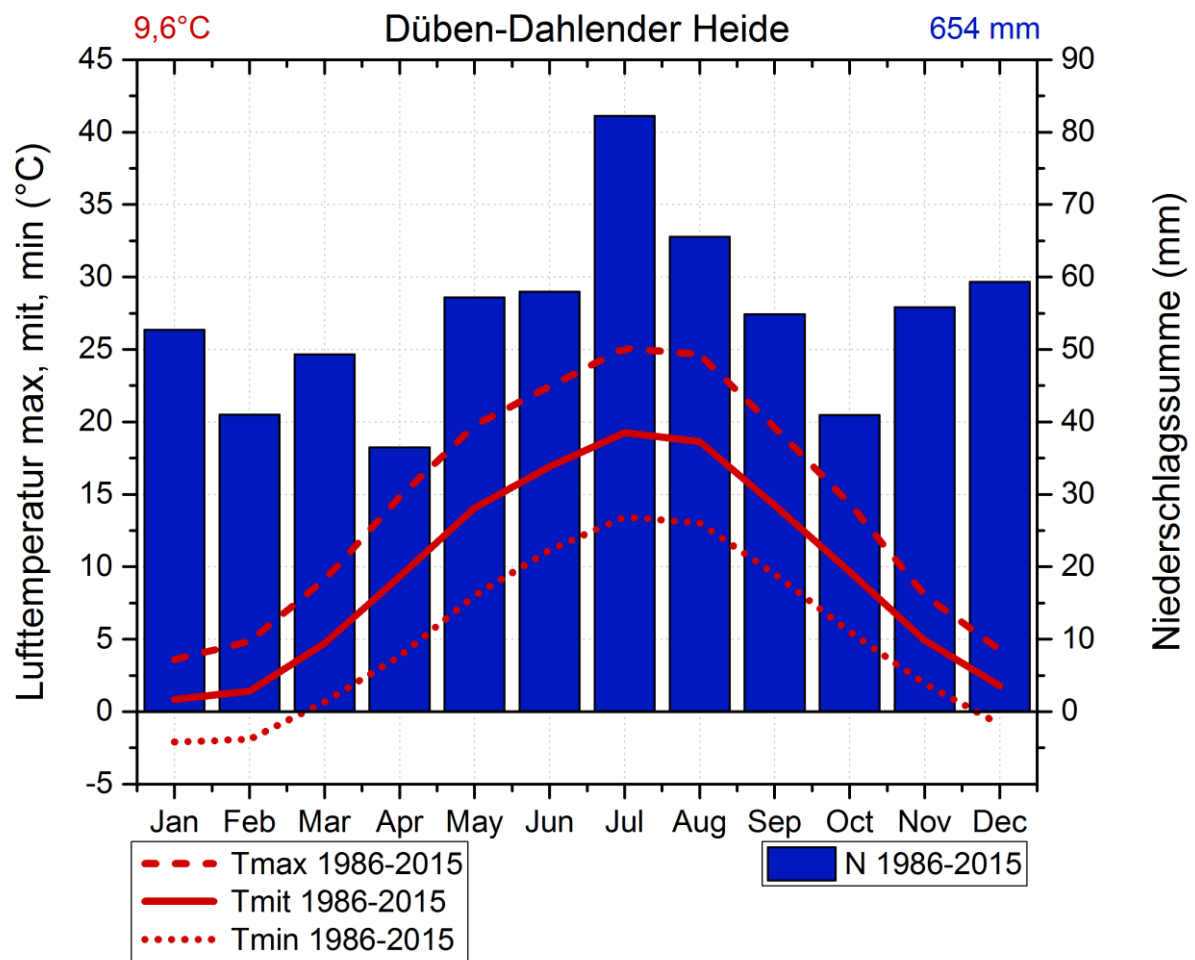
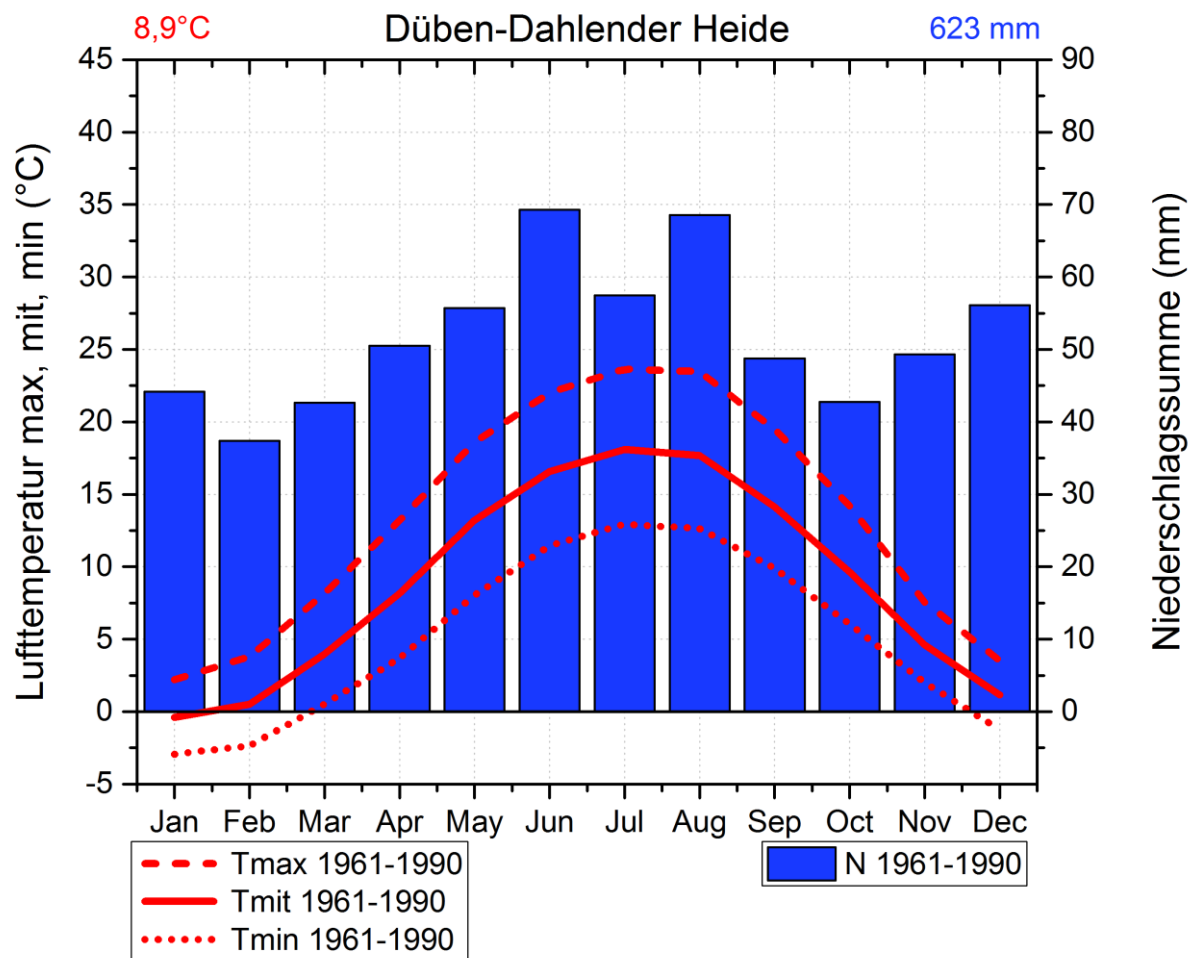


# Änderung mittl. Temperatur, Niederschlag 1986-2015 vs. 1971-1990

Sächsische Elbtalniederung

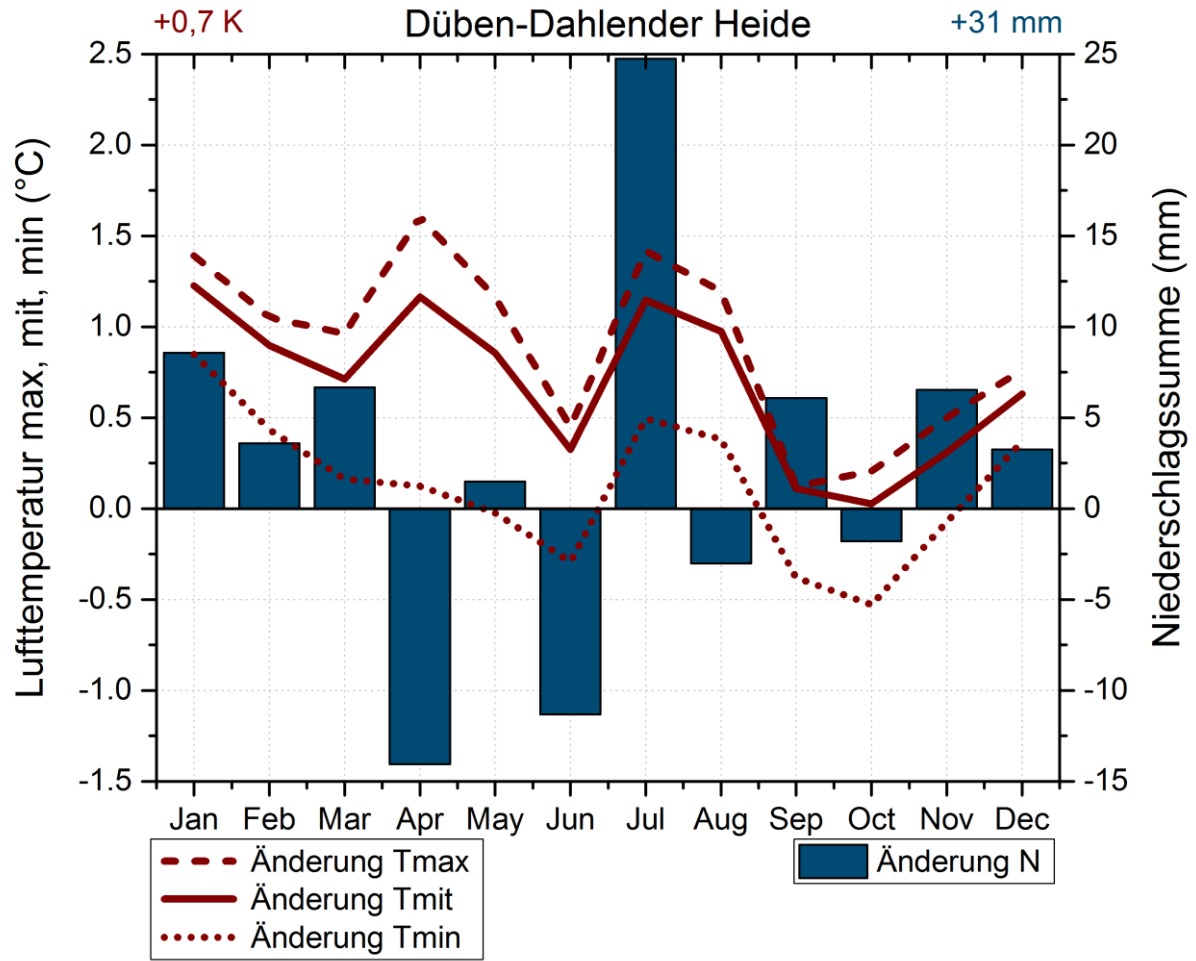


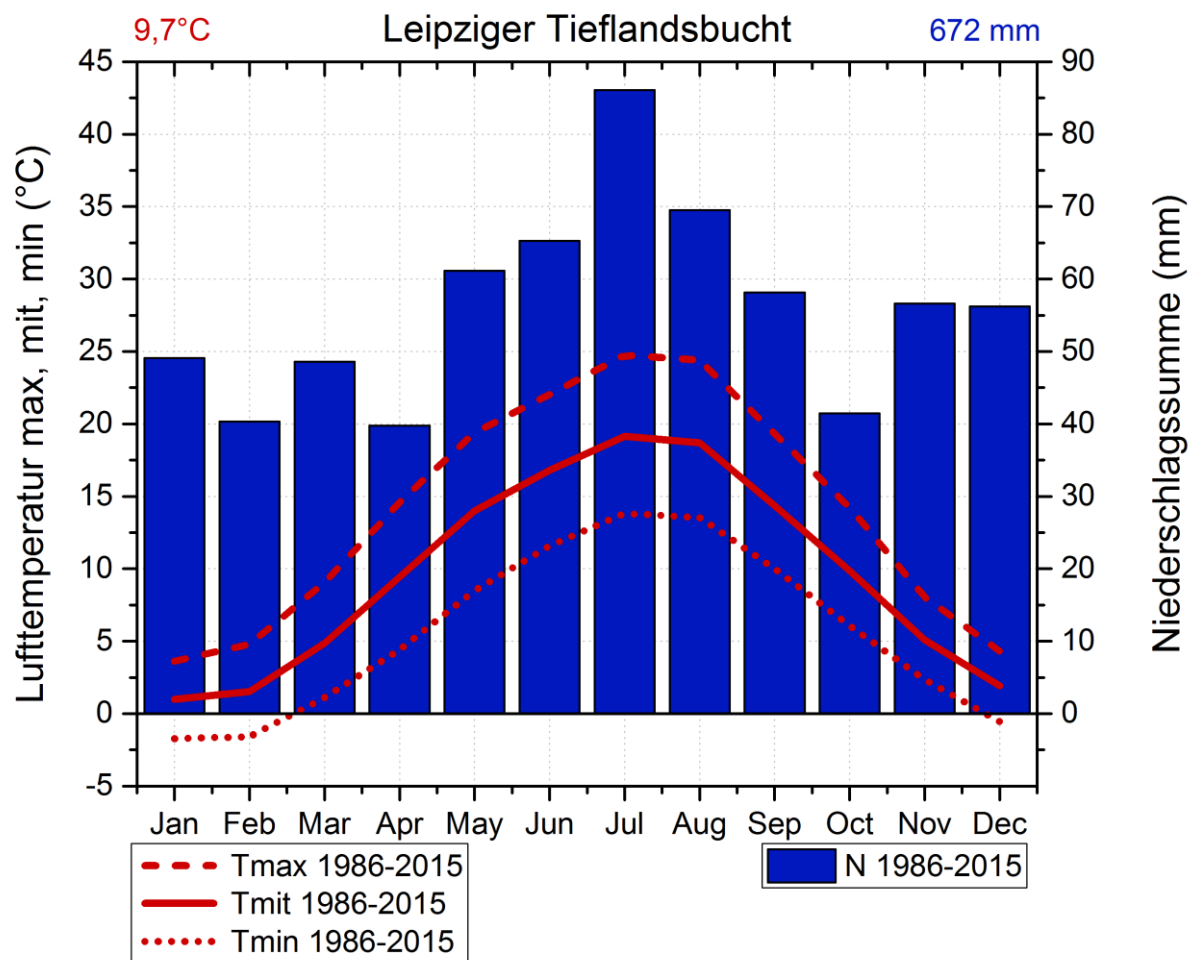


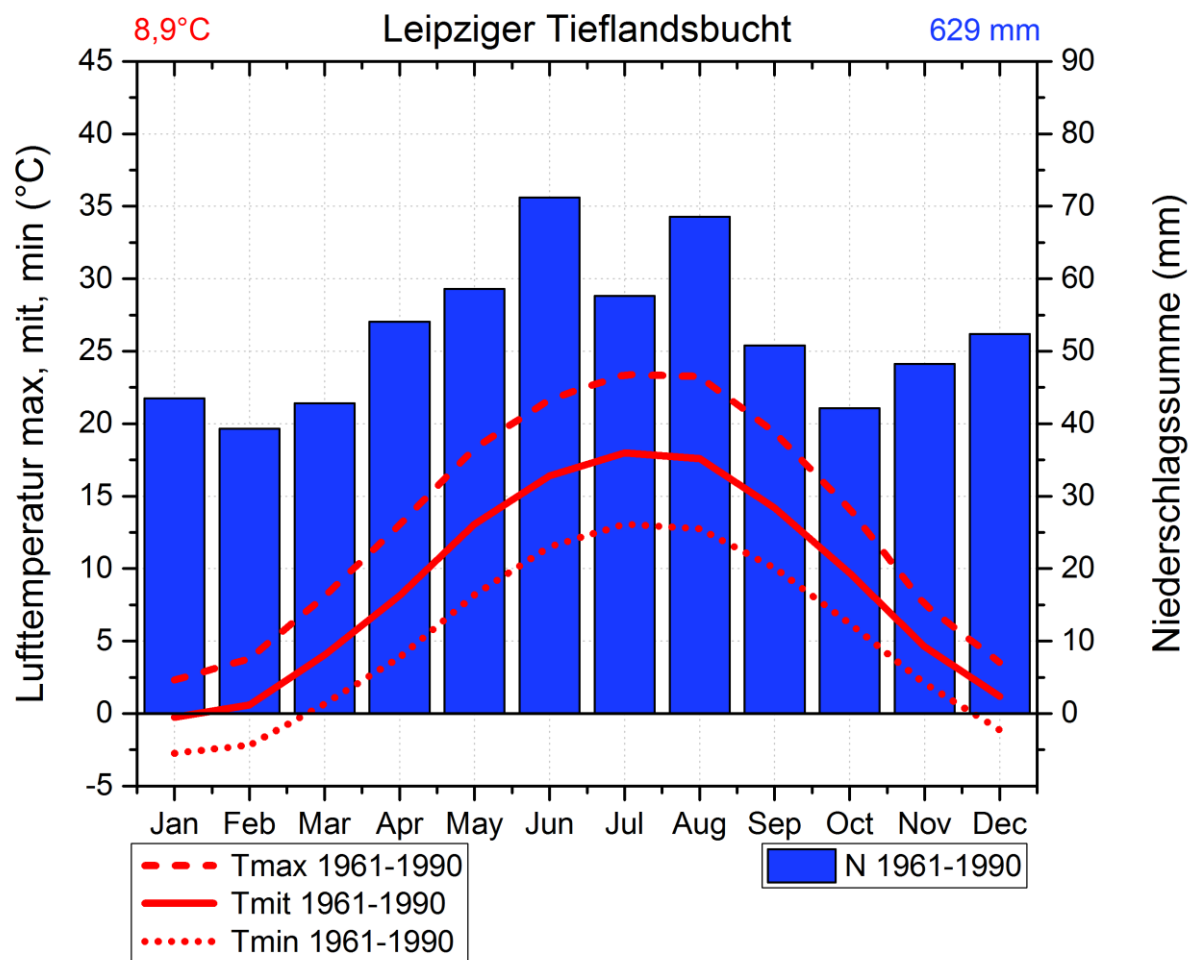


Änderung mittl. Temperatur, Niederschlag  
1986-2015 vs. 1961-1990

Düben-Dahleider Heide

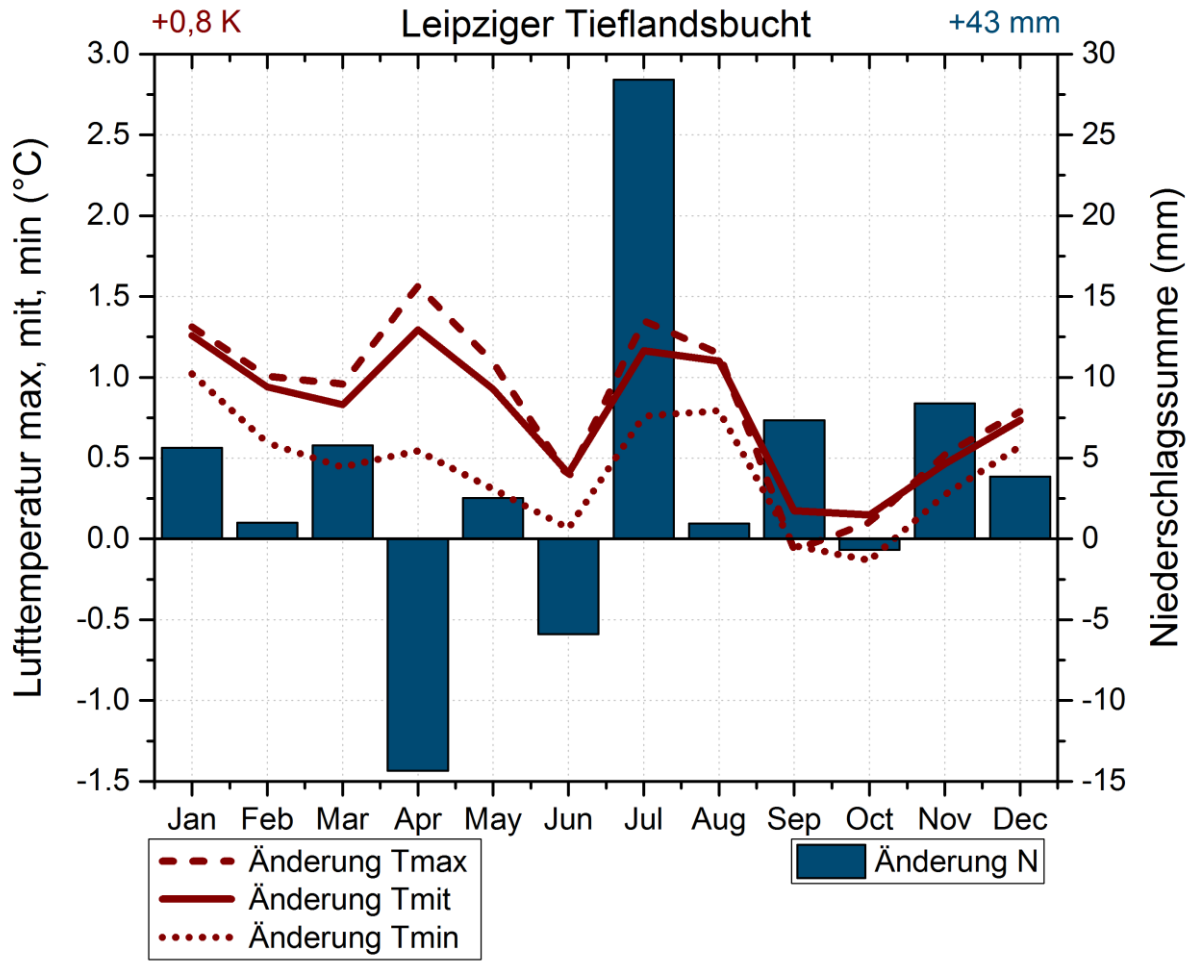


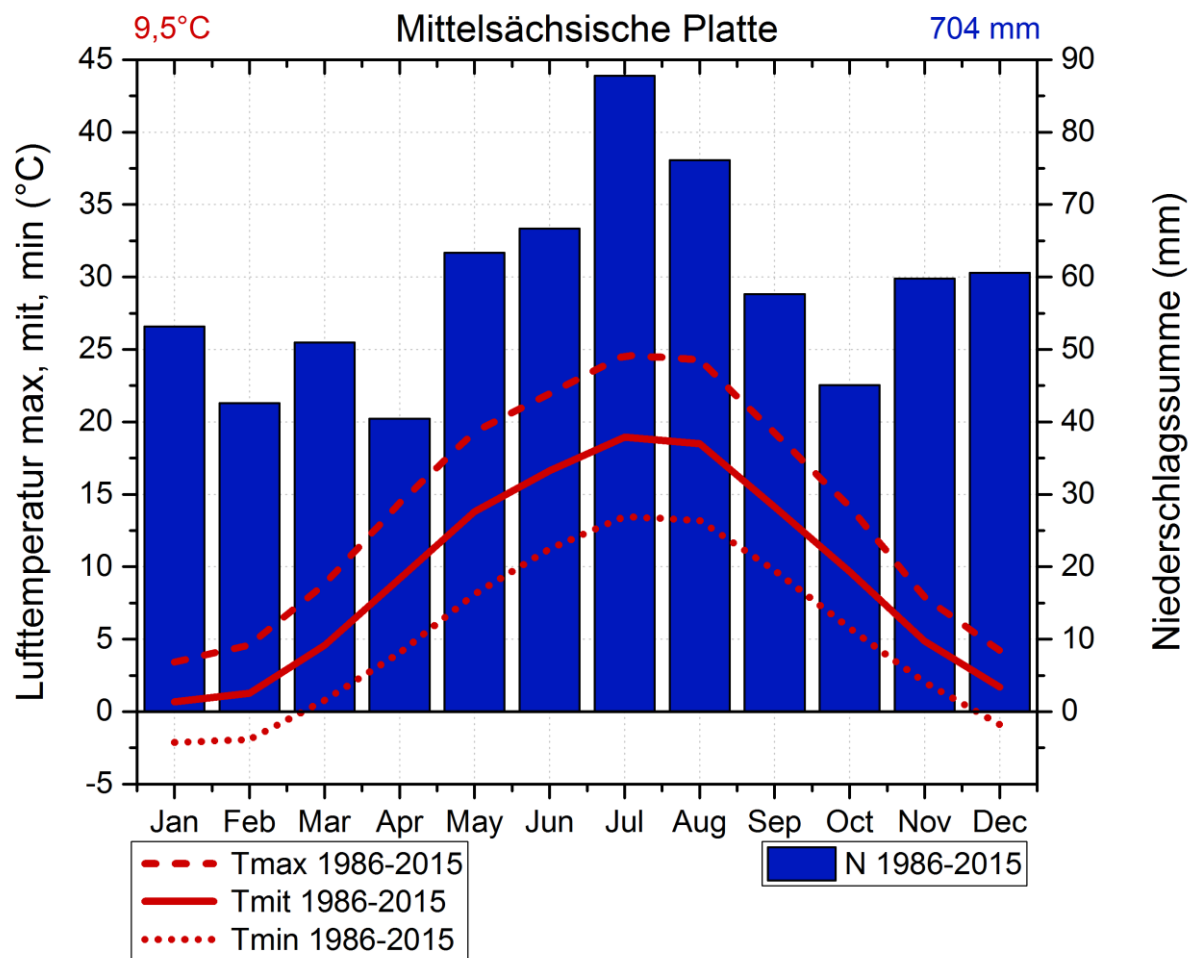


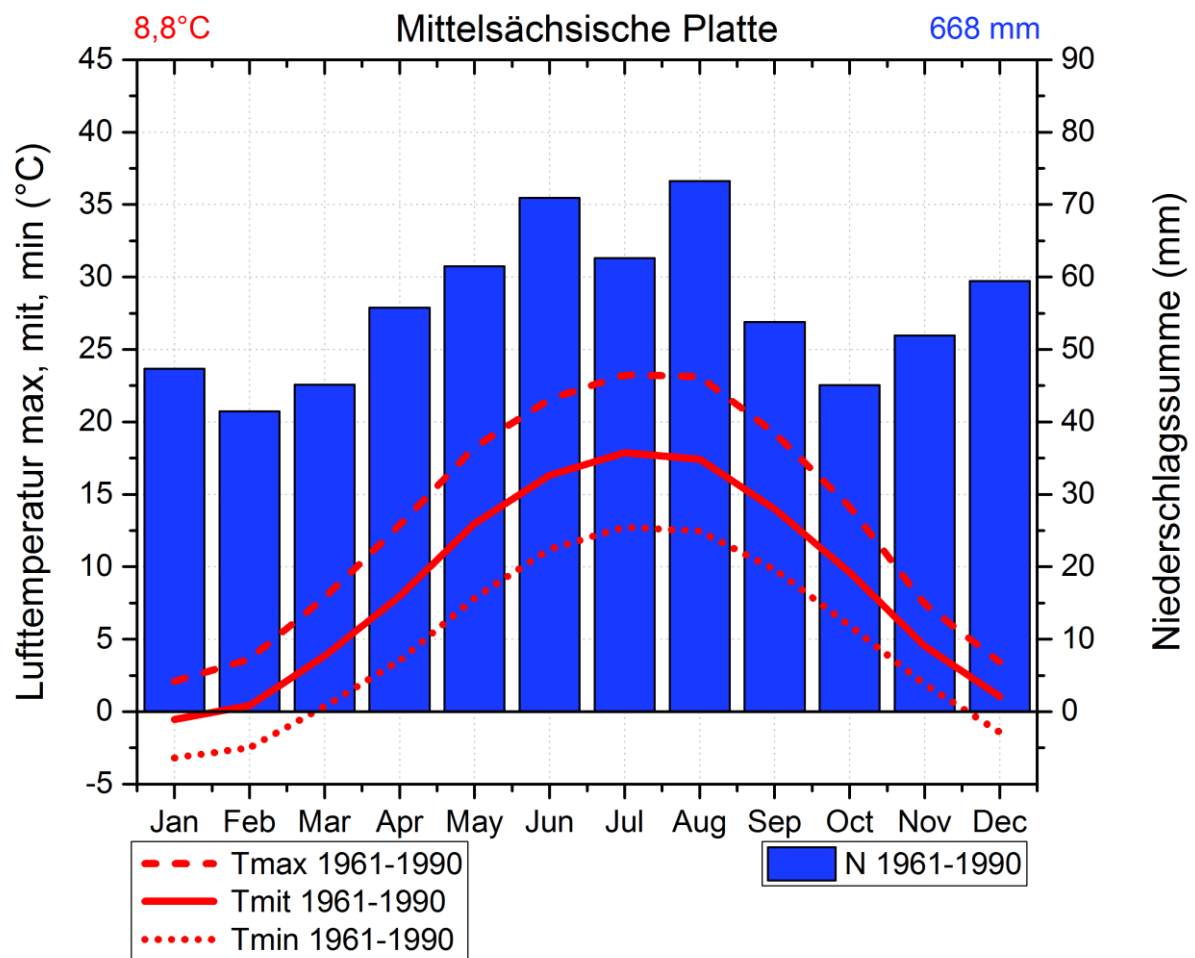


Änderung mittl. Temperatur, Niederschlag  
1986-2015 vs. 1961-1990

Leipziger Tieflandsbucht

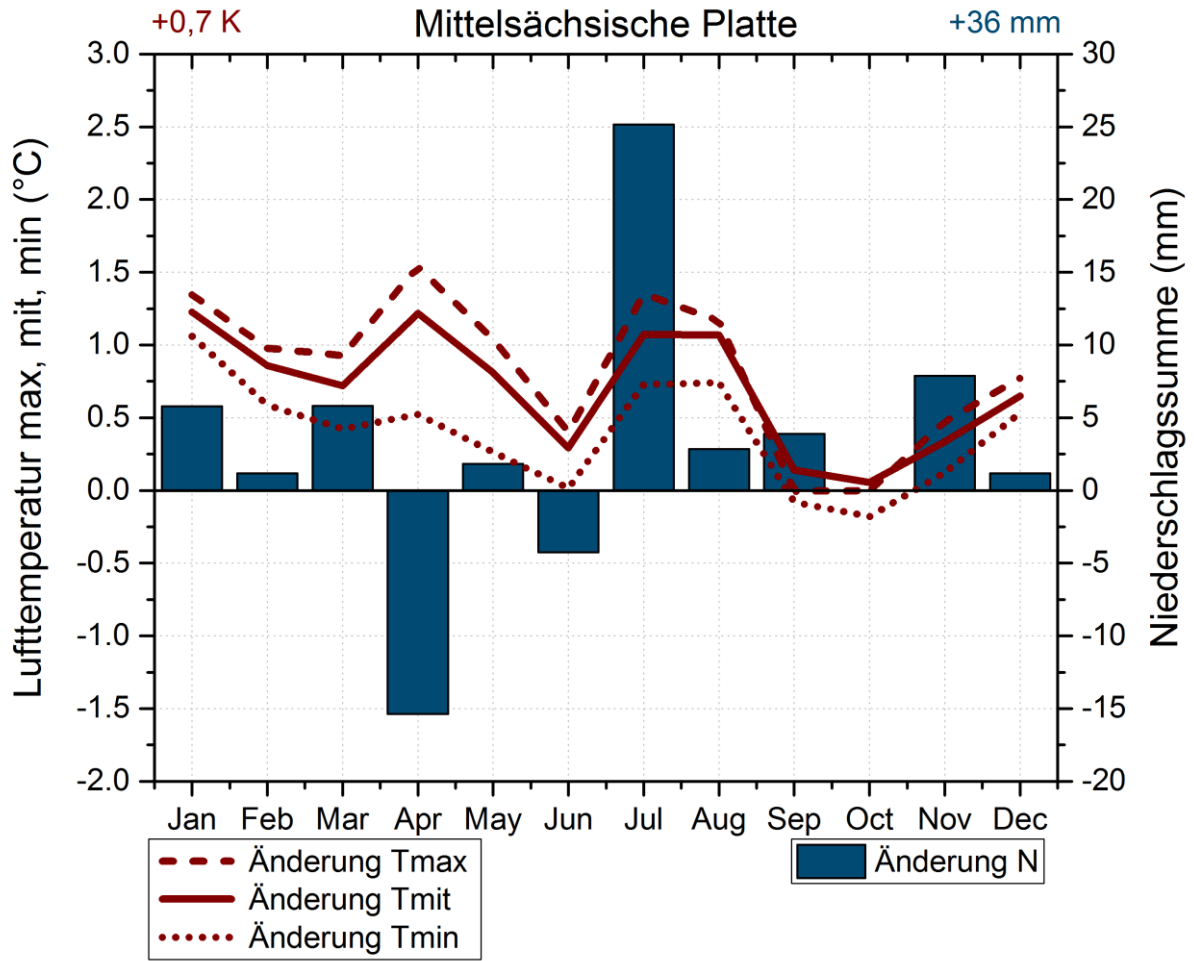


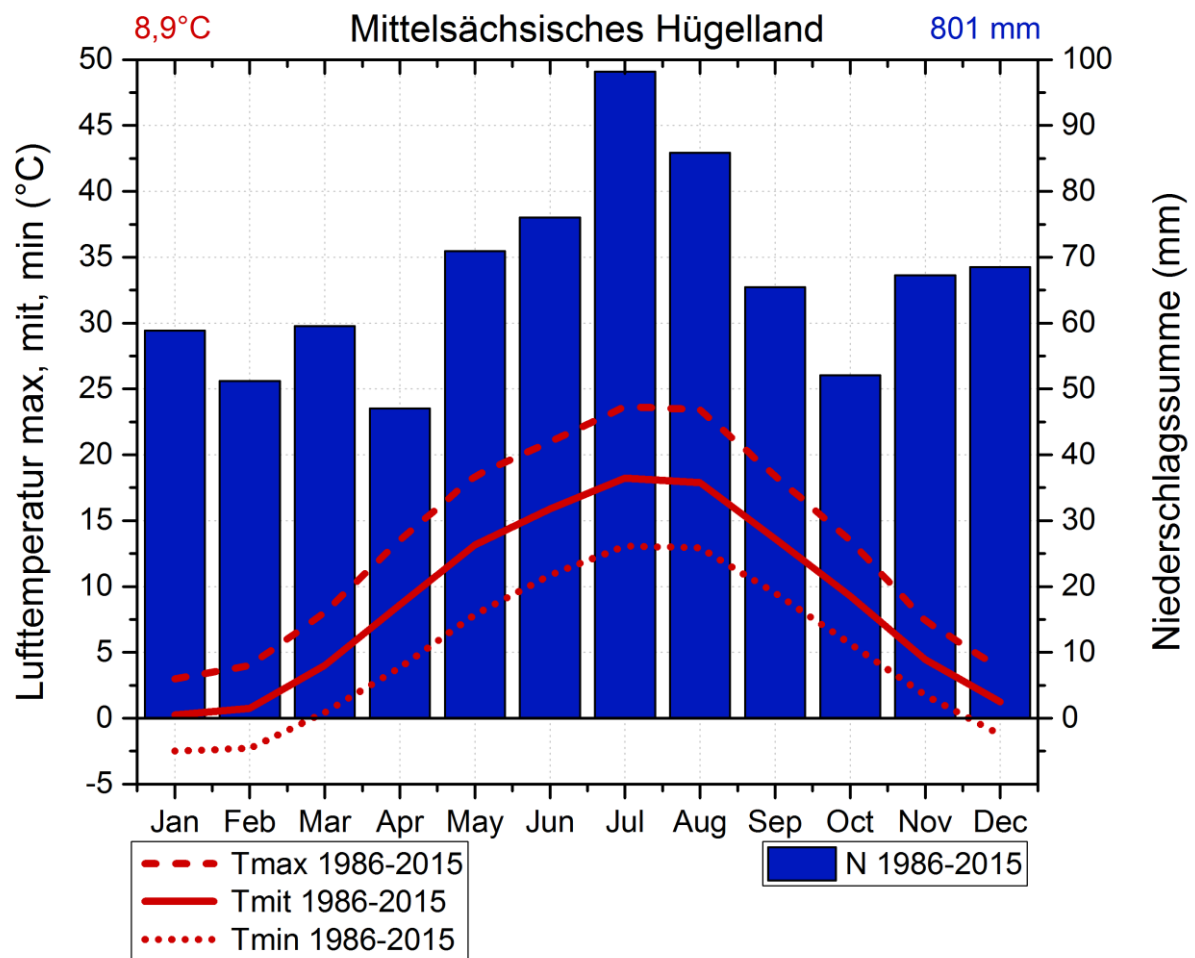


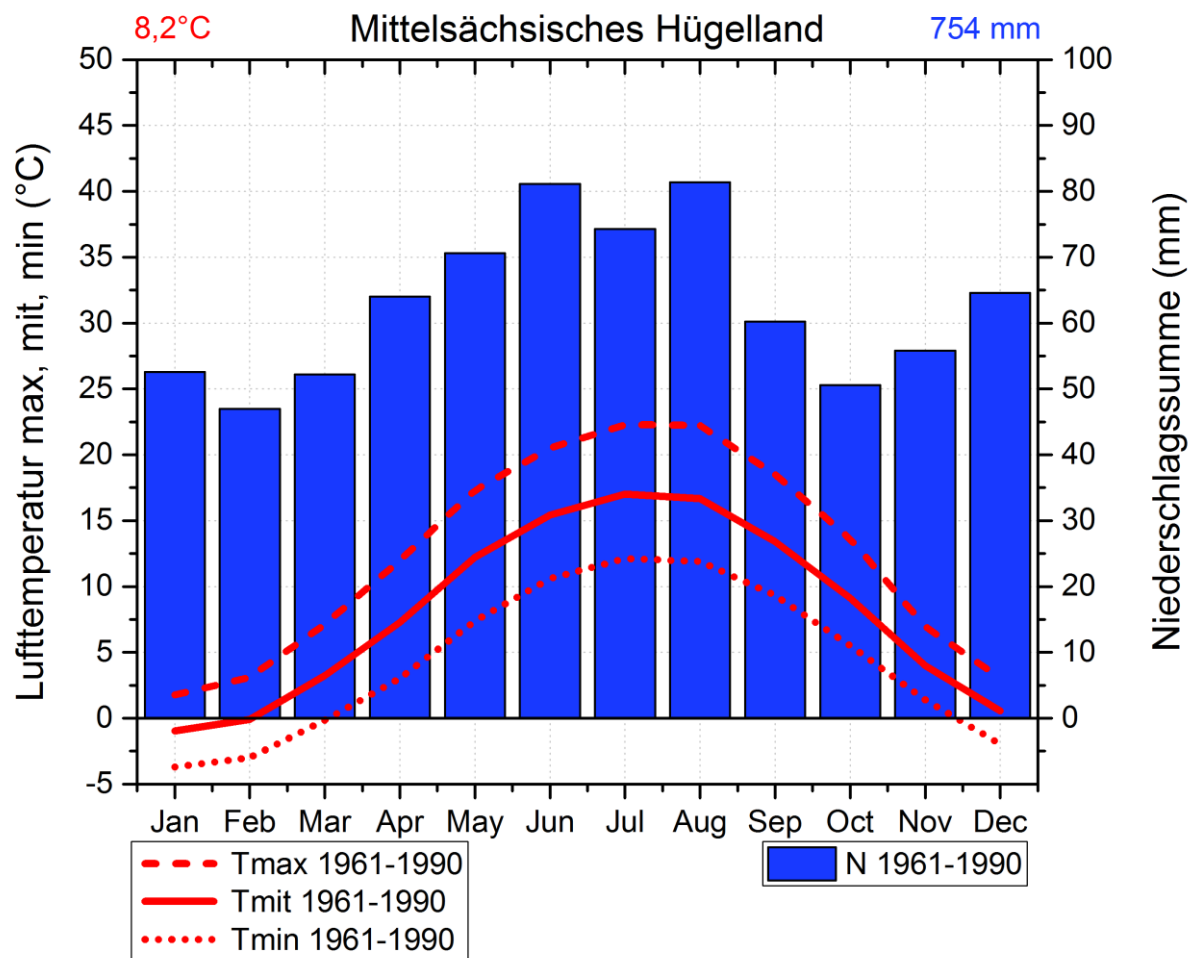


Änderung mittl. Temperatur, Niederschlag  
1986-2015 vs. 1961-1990

Mittelsächsische Platte

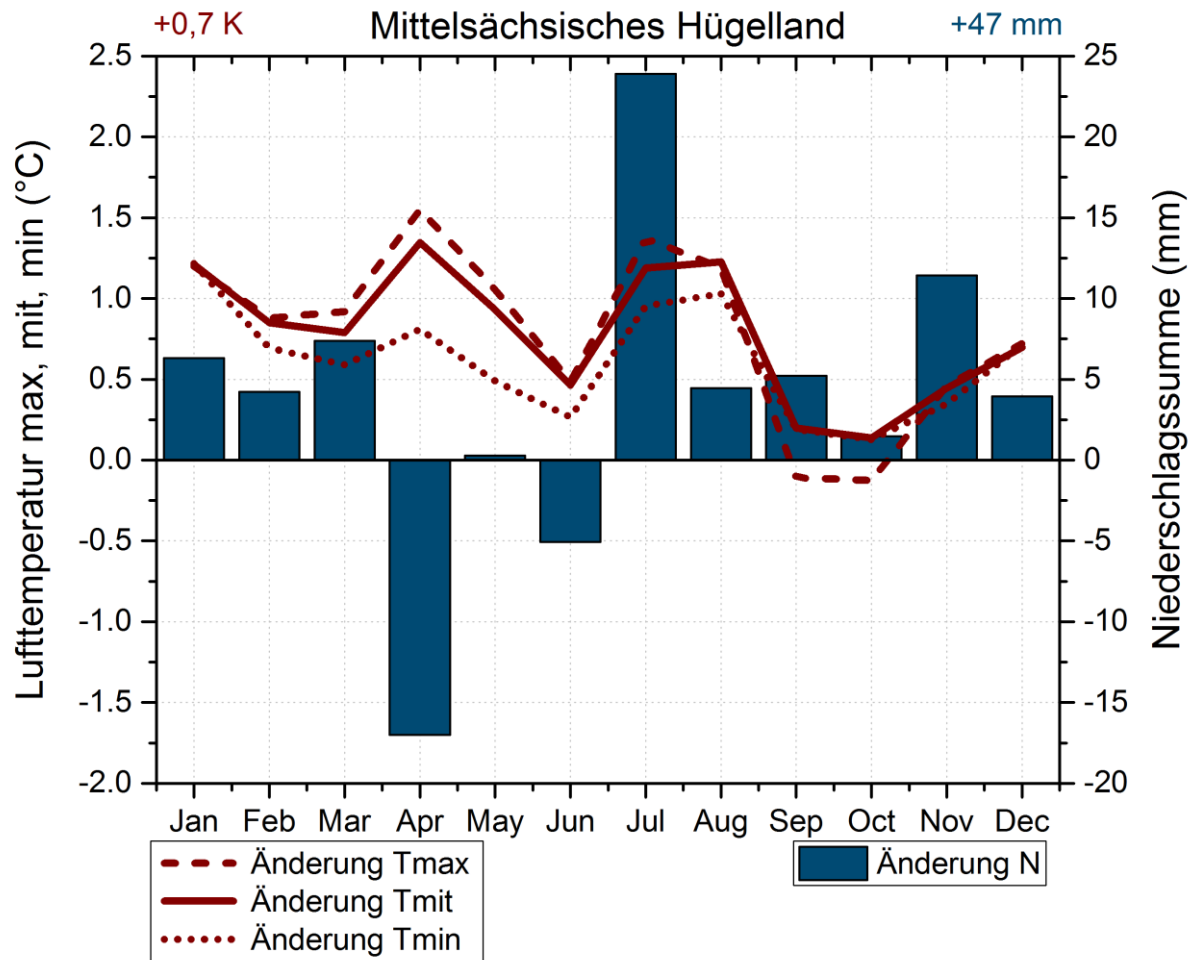


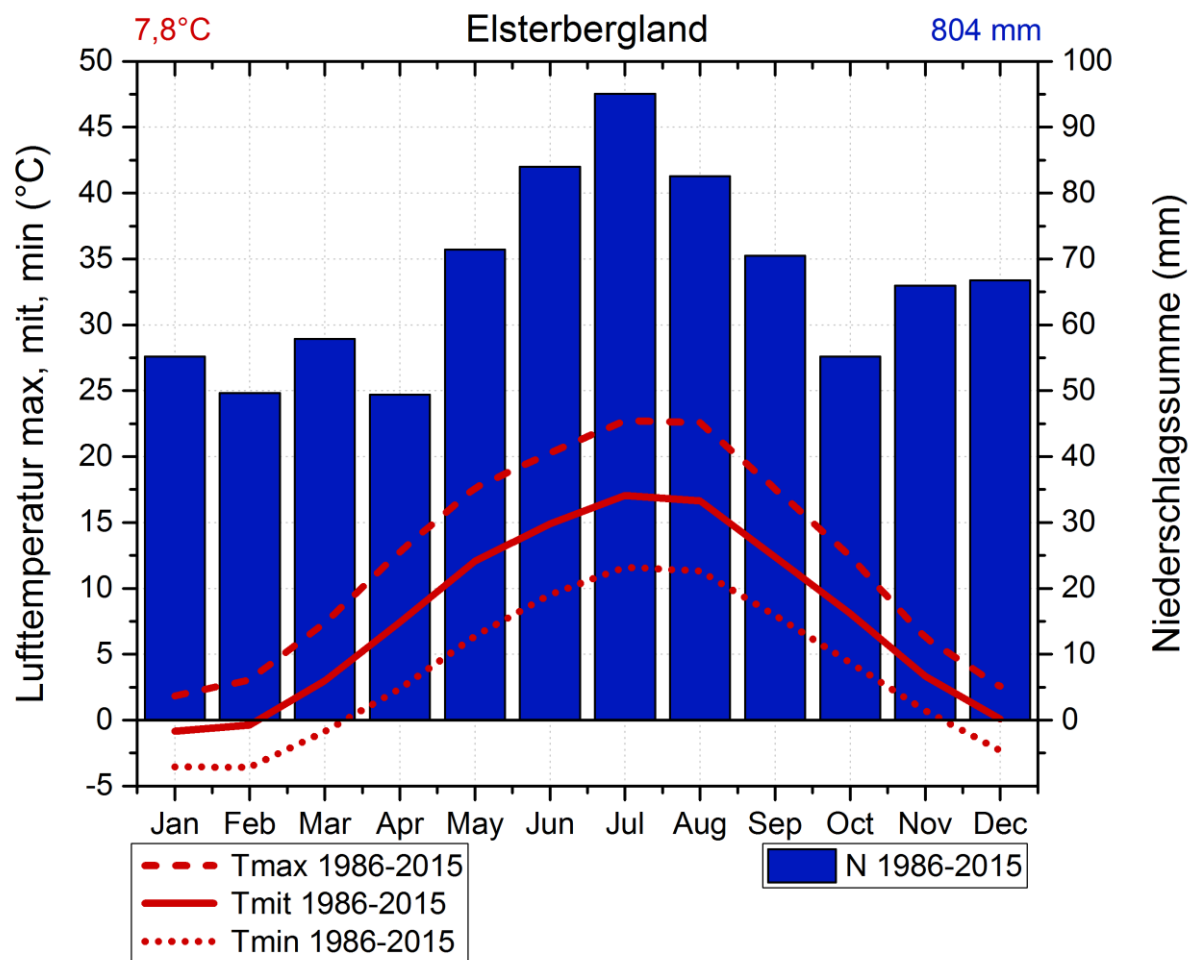


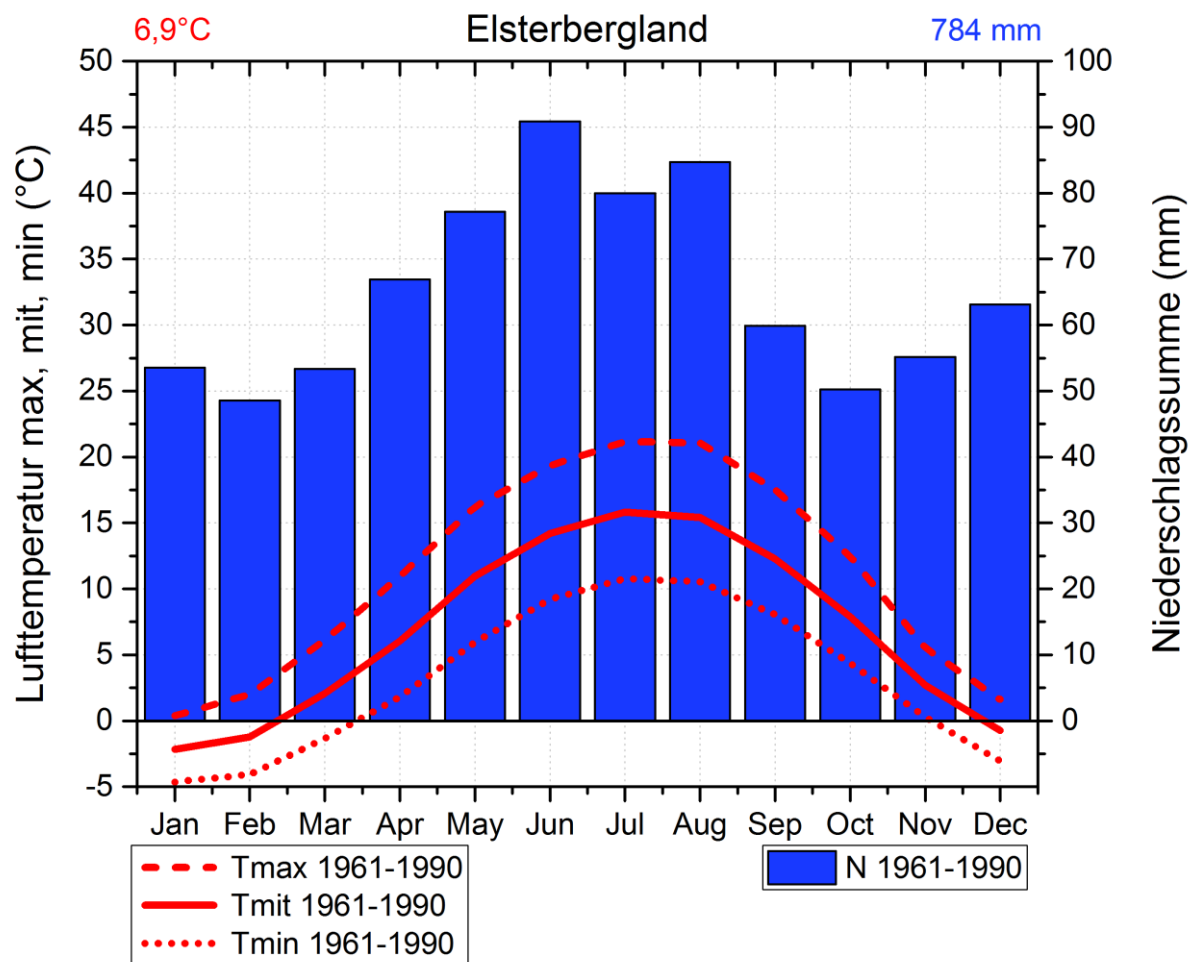


# Änderung mittl. Temperatur, Niederschlag 1986-2015 vs. 1978-1990

Mittelsächsisches Hügelland

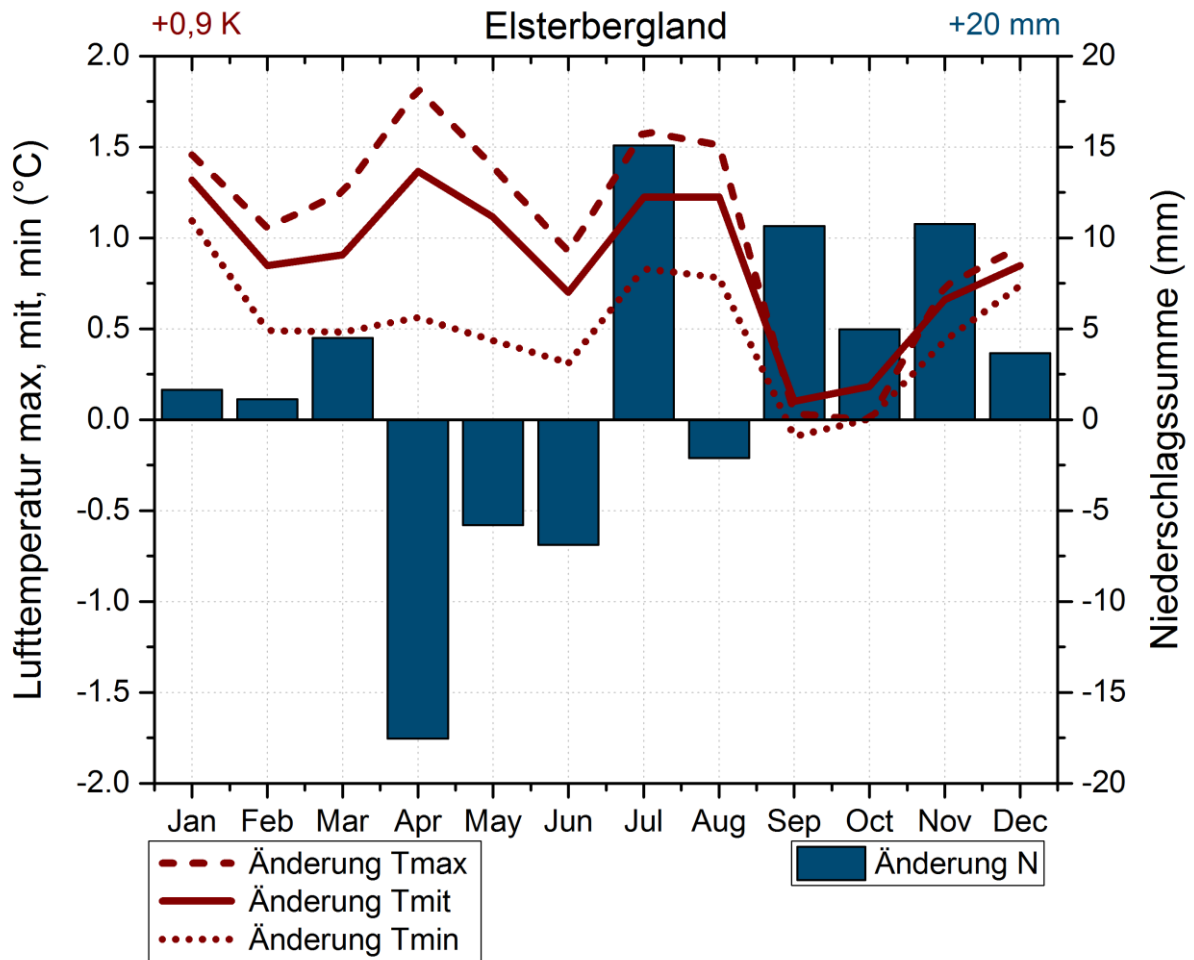


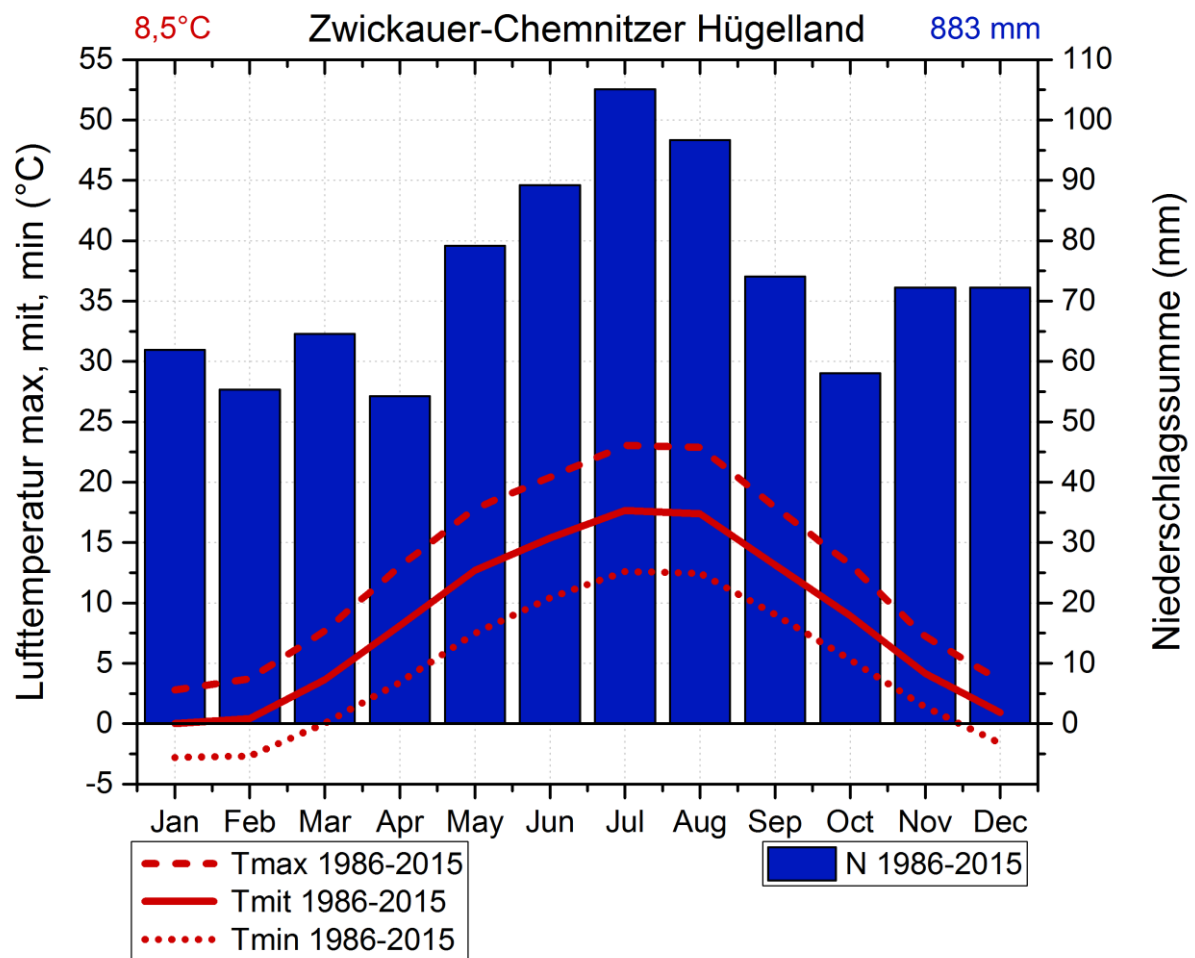


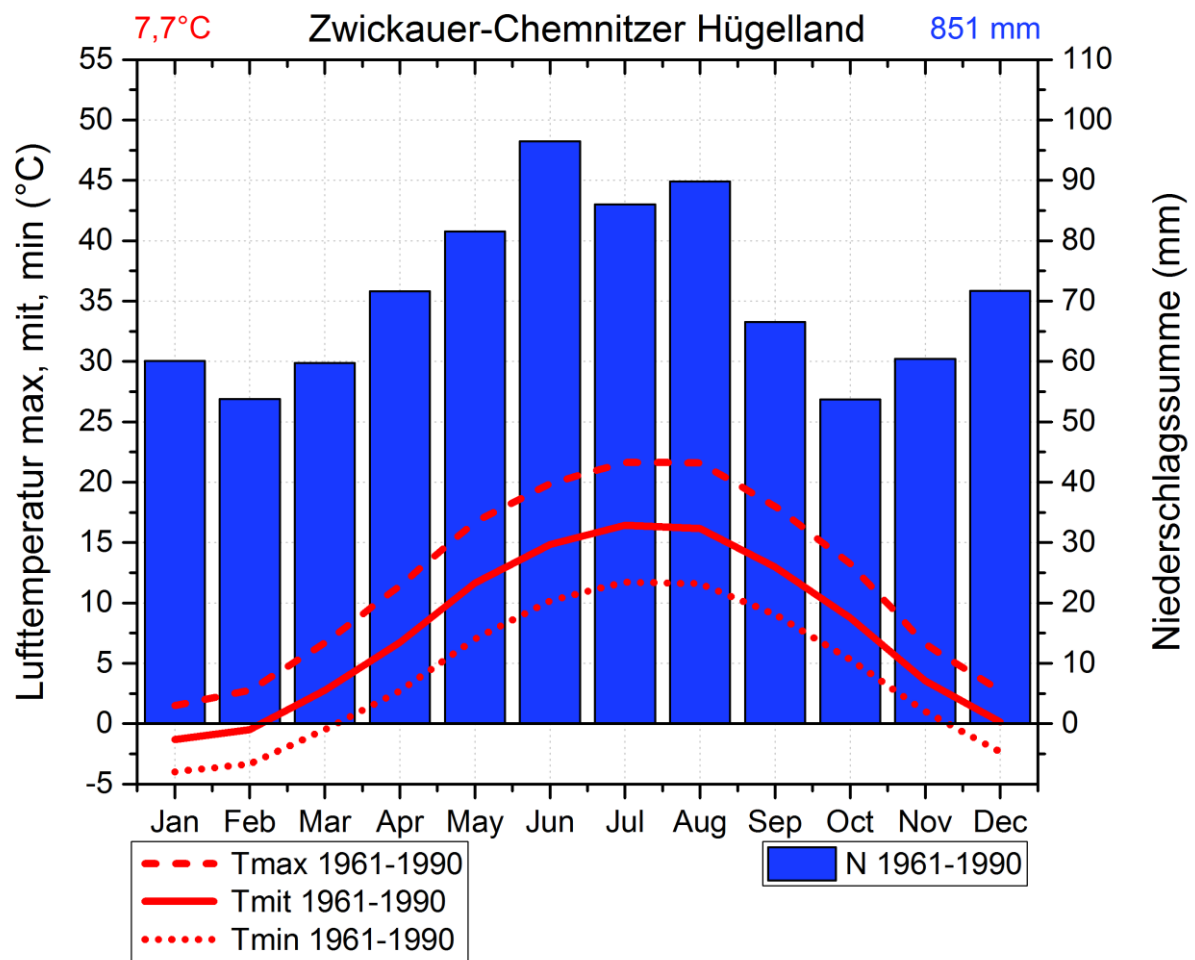


# Änderung mittl. Temperatur, Niederschlag 1986-2015 vs. 1961-1990

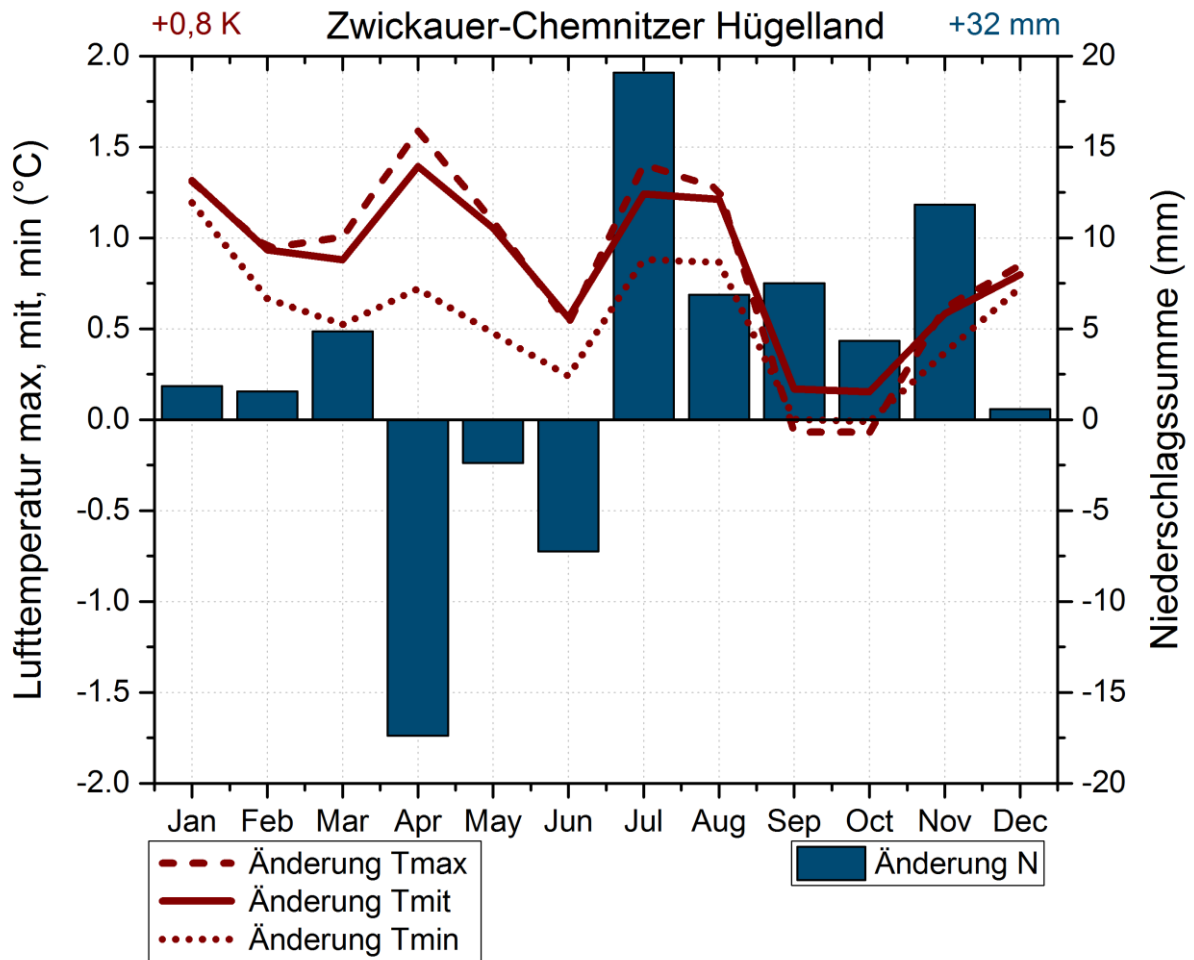
Elsterbergland

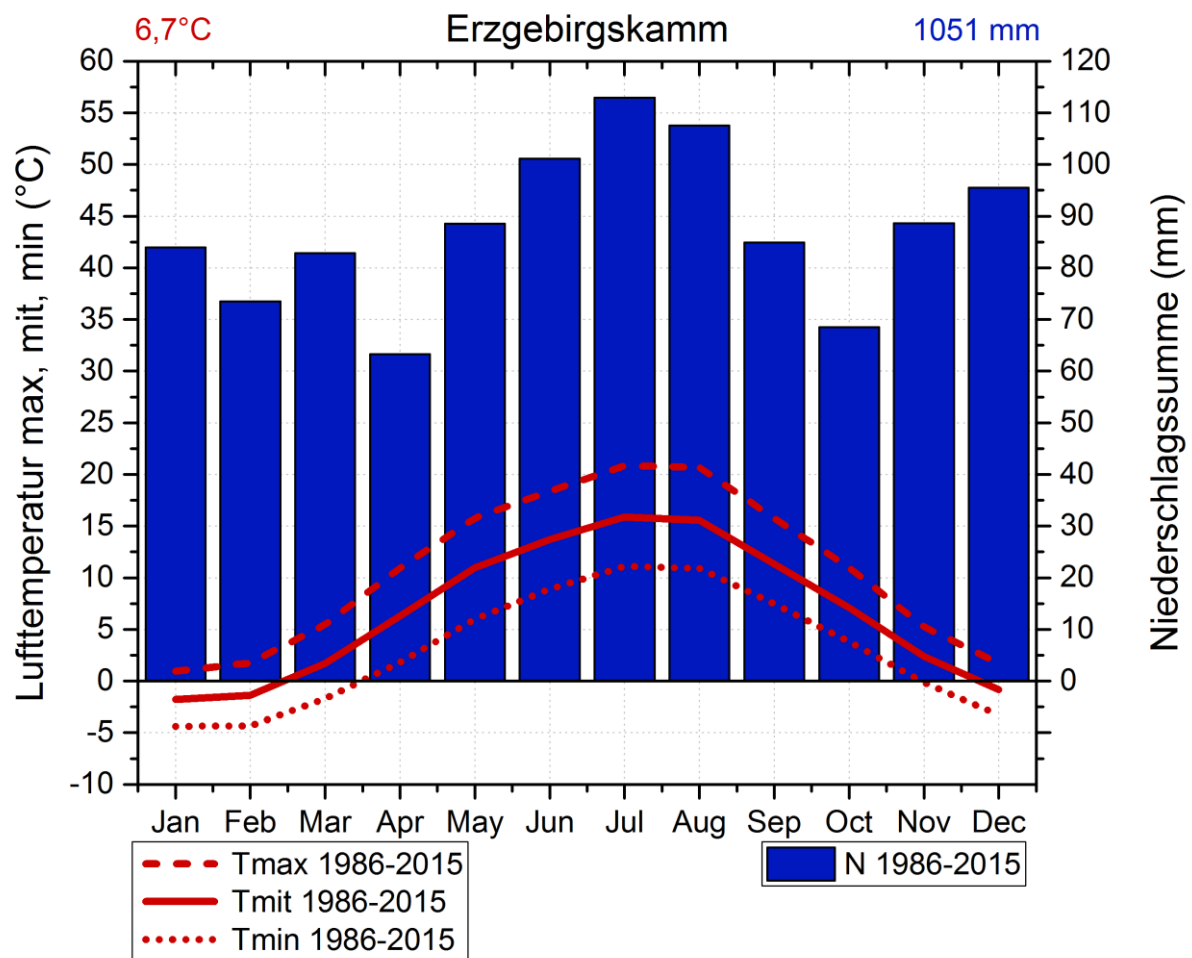


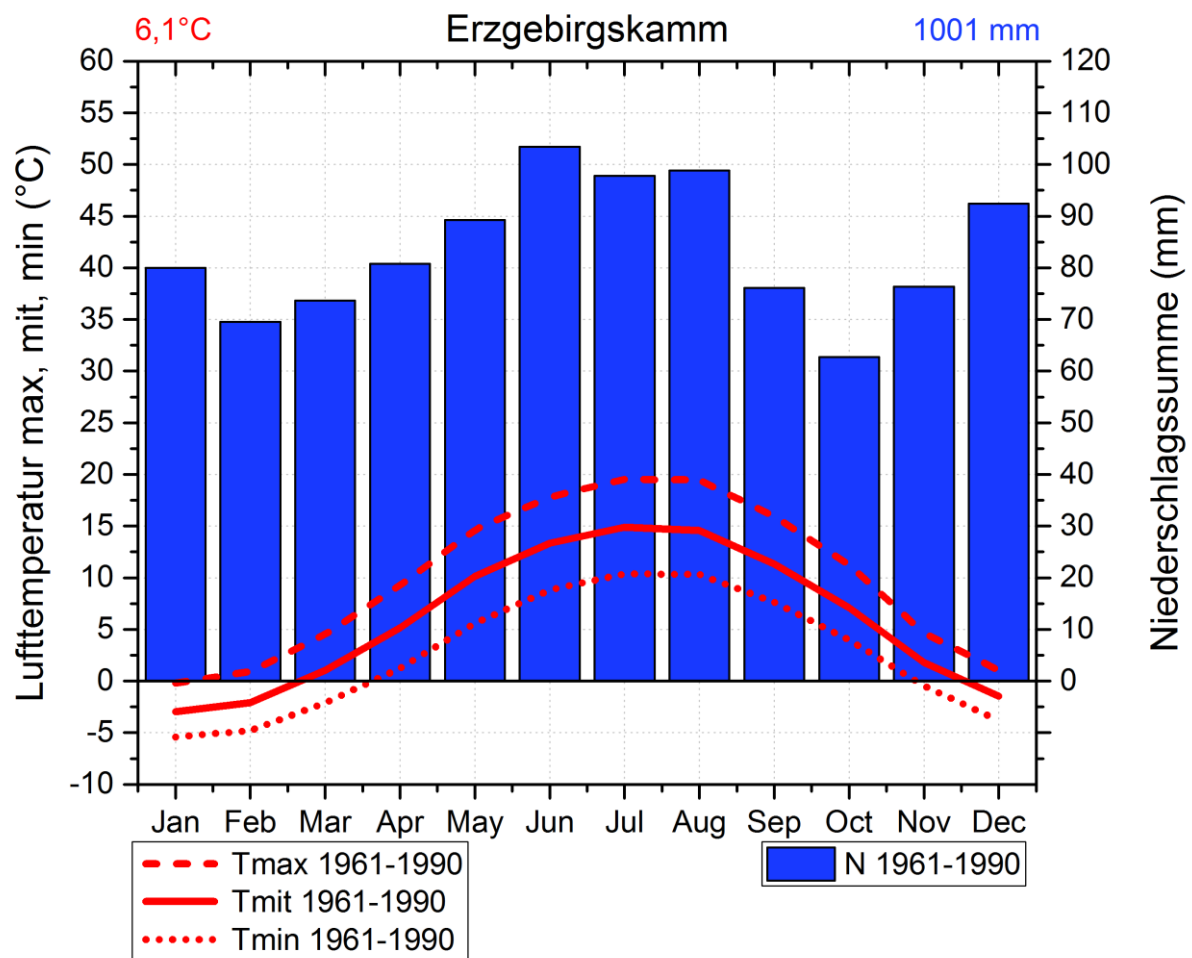




Änderung mittl. Temperatur, Niederschlag  
1986-2015 vs. 1961-1990

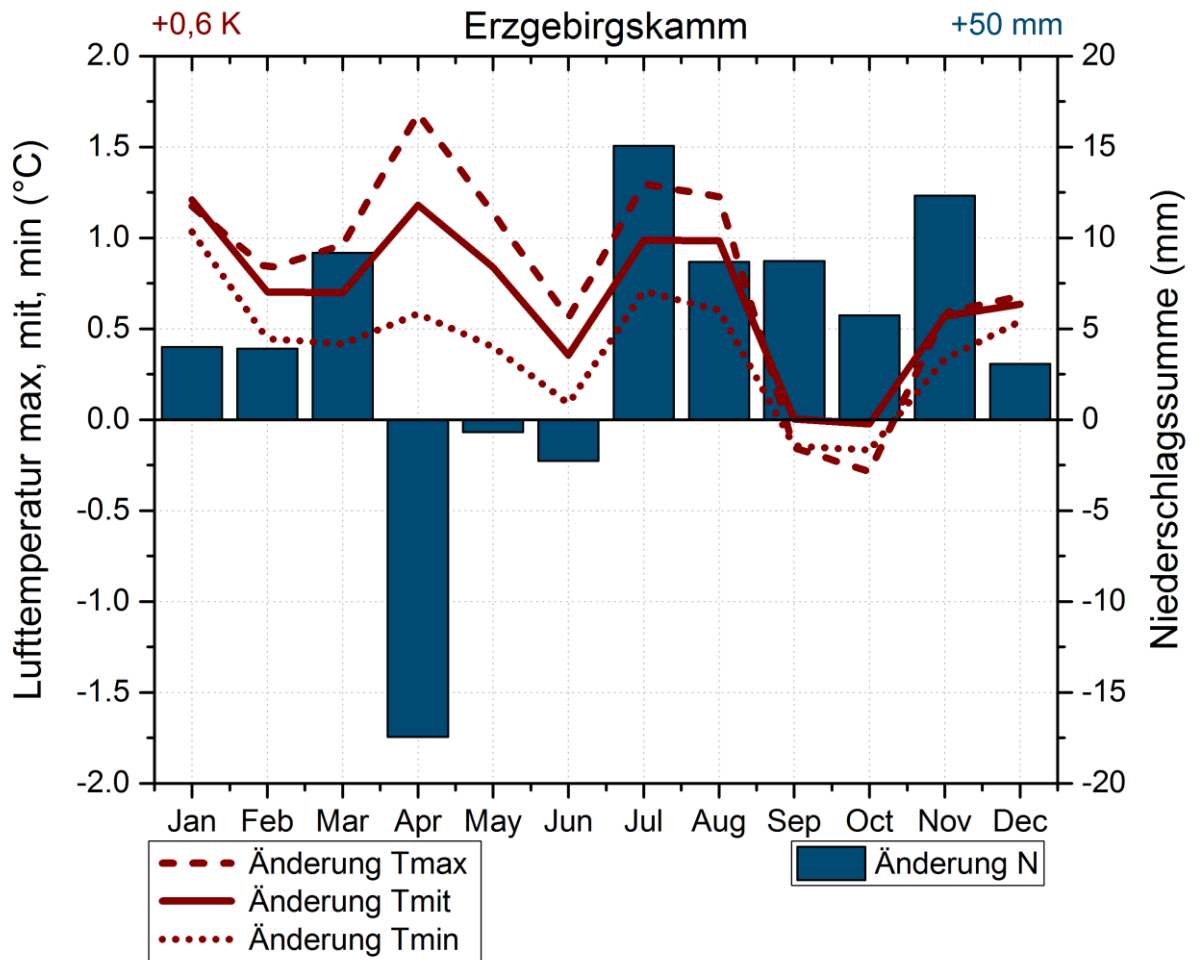


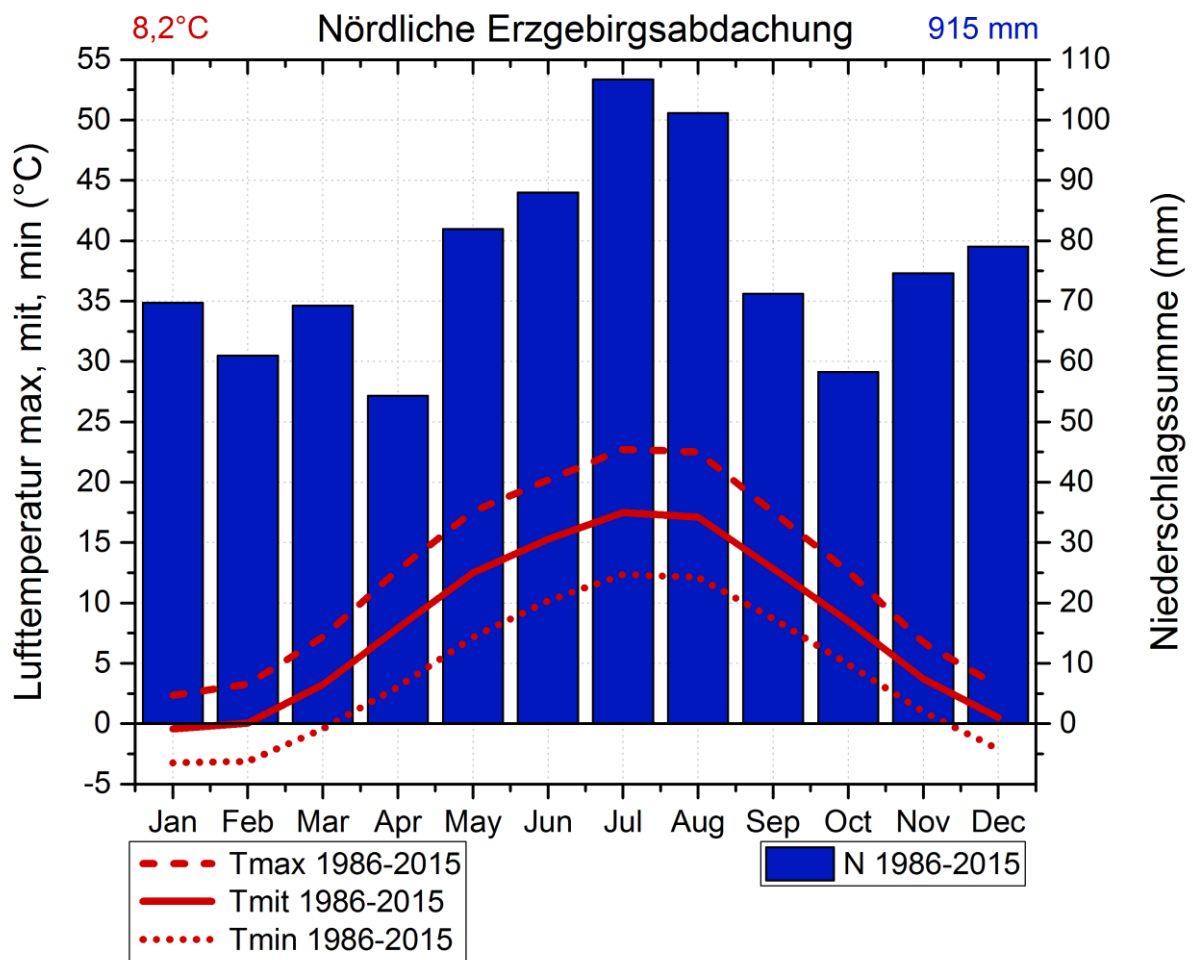


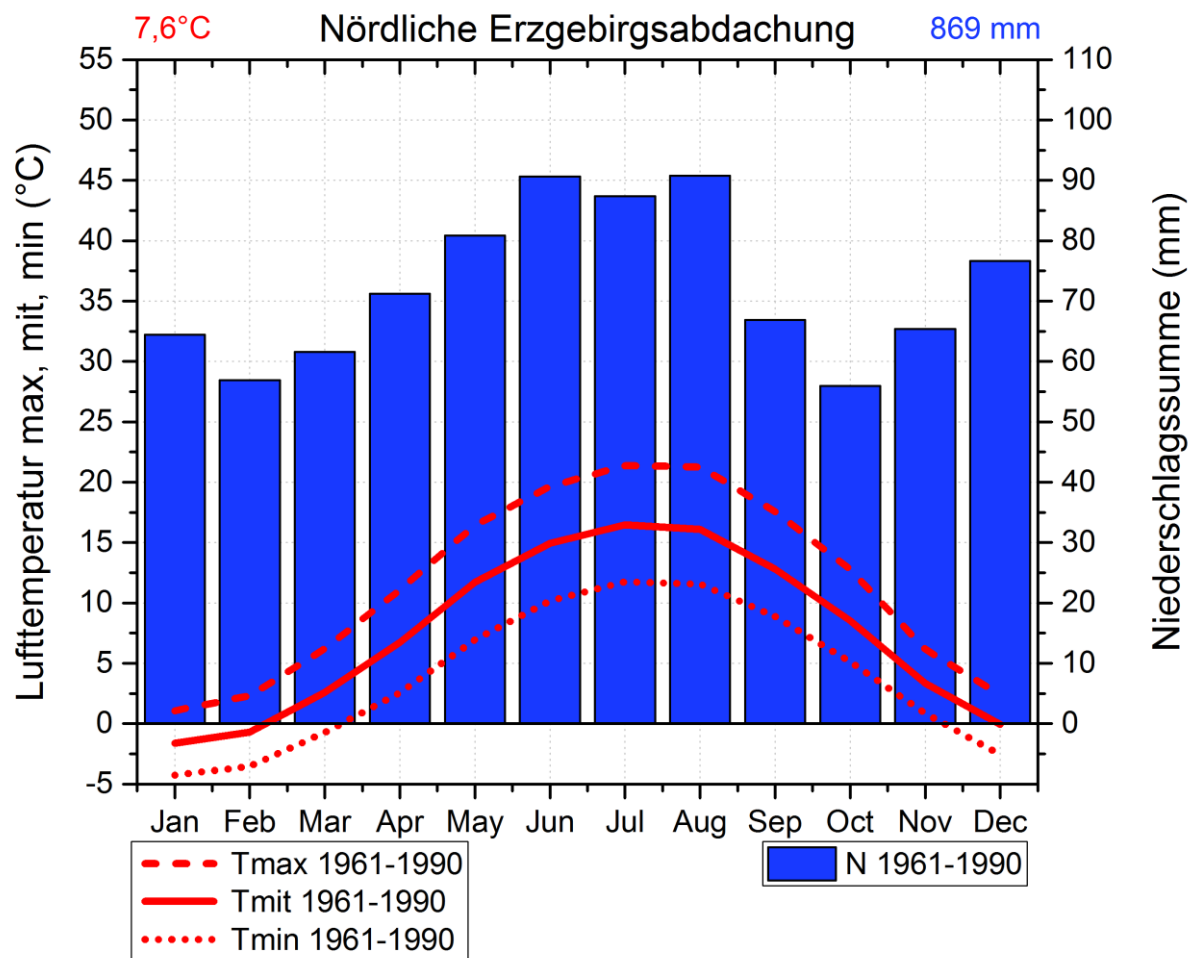


# Änderung mittl. Temperatur, Niederschlag 1986-2015 vs. 1961-1990

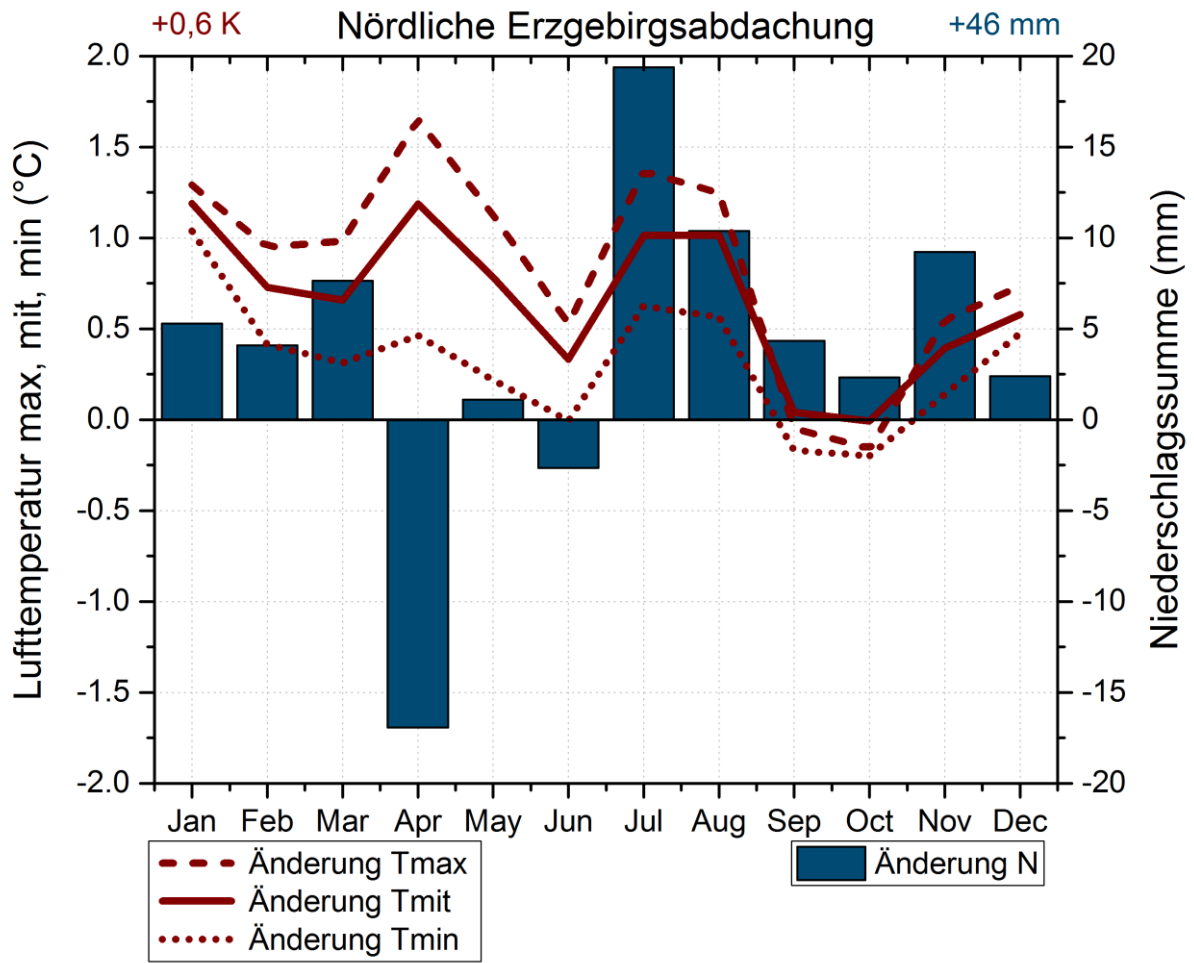
Erzgebirgskamm

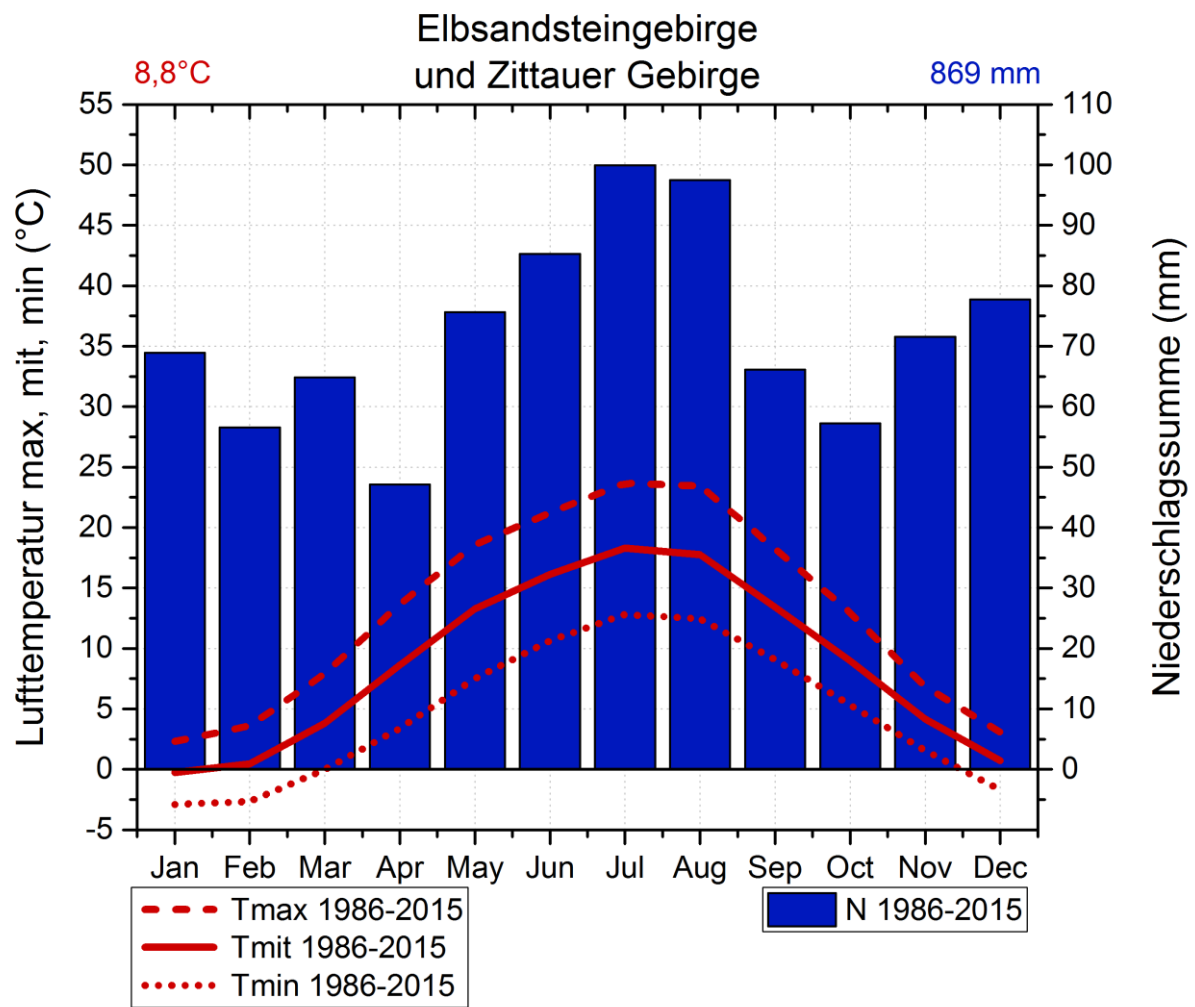


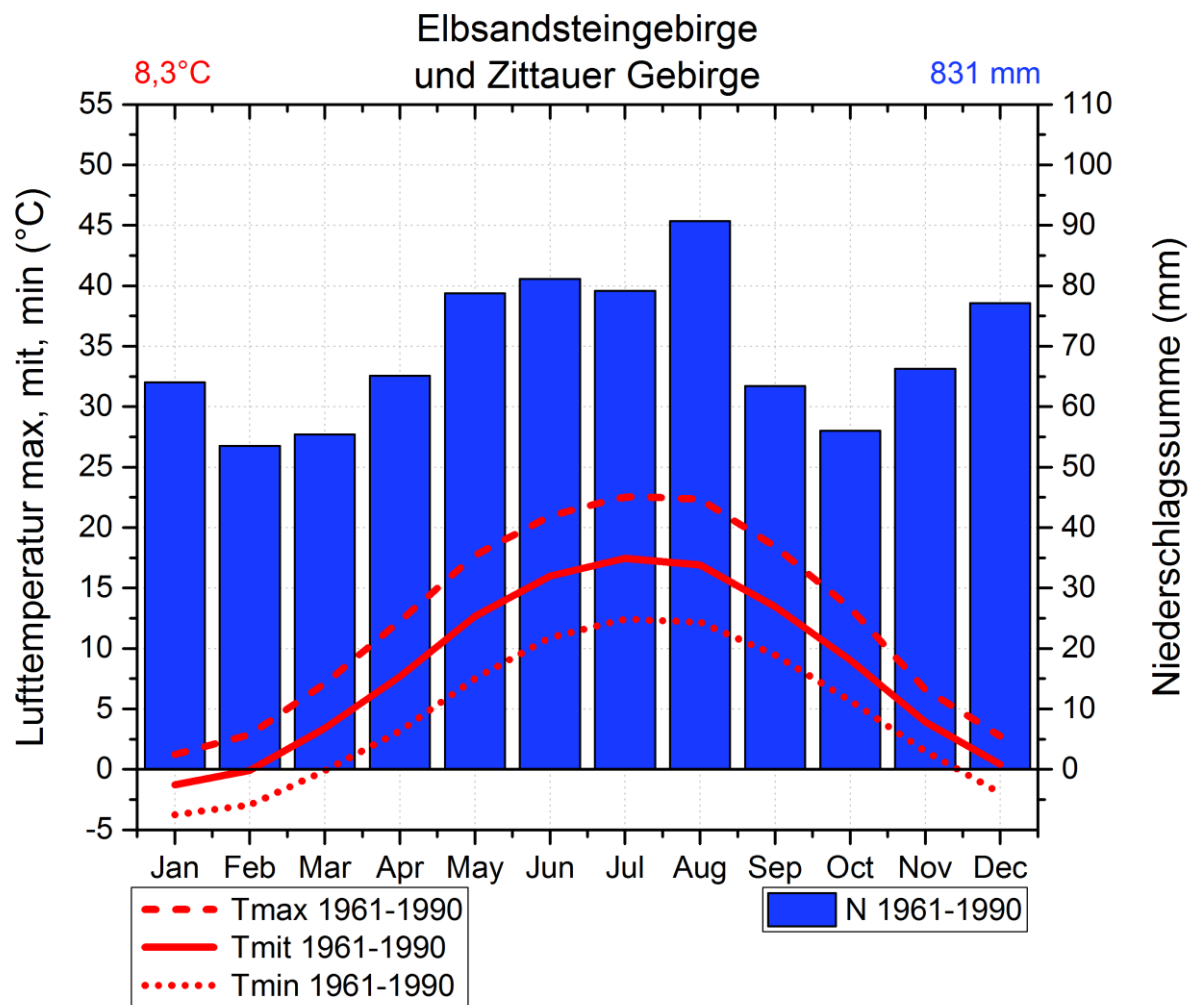




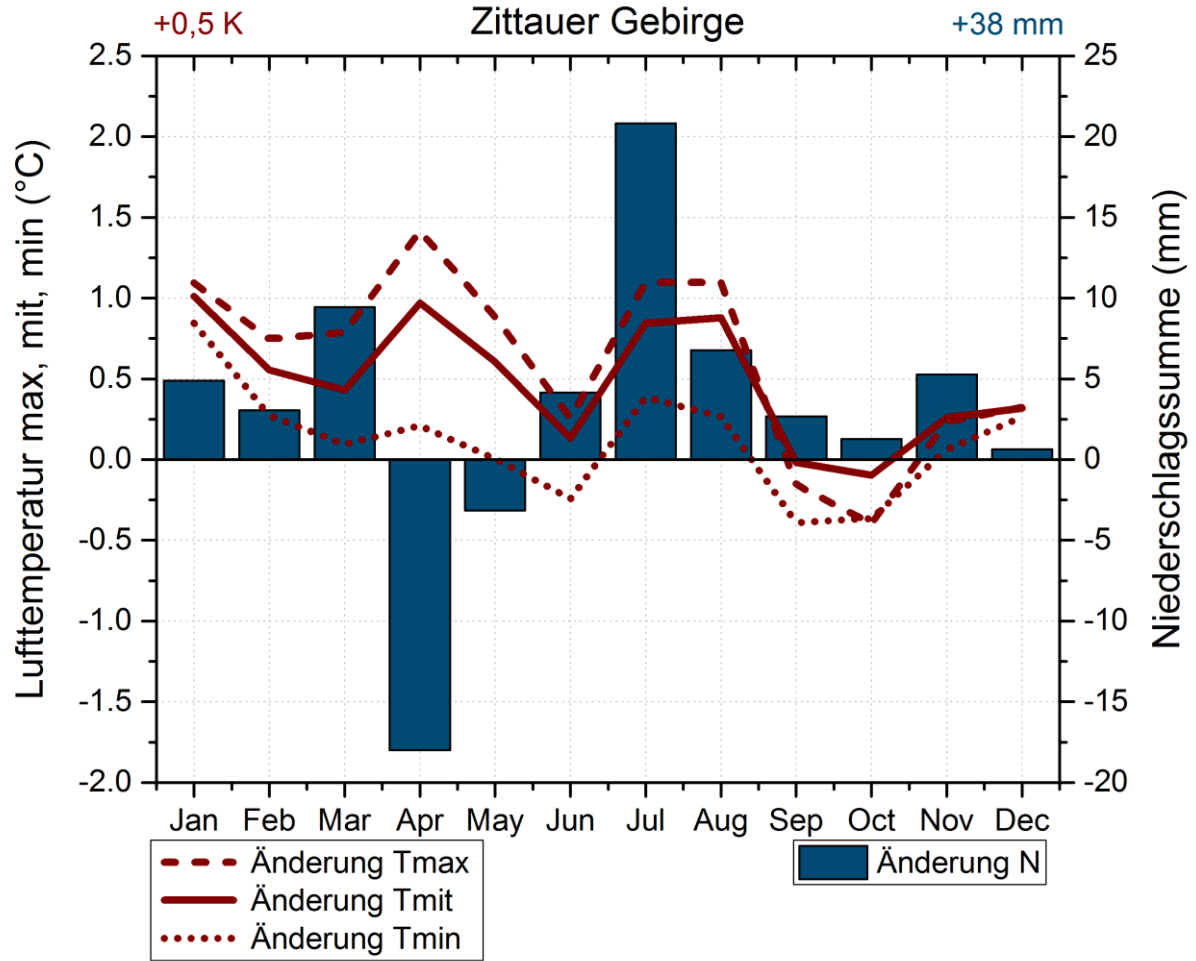
# Änderung mittl. Temperatur, Niederschlag 1986-2015 vs. 1961-1990

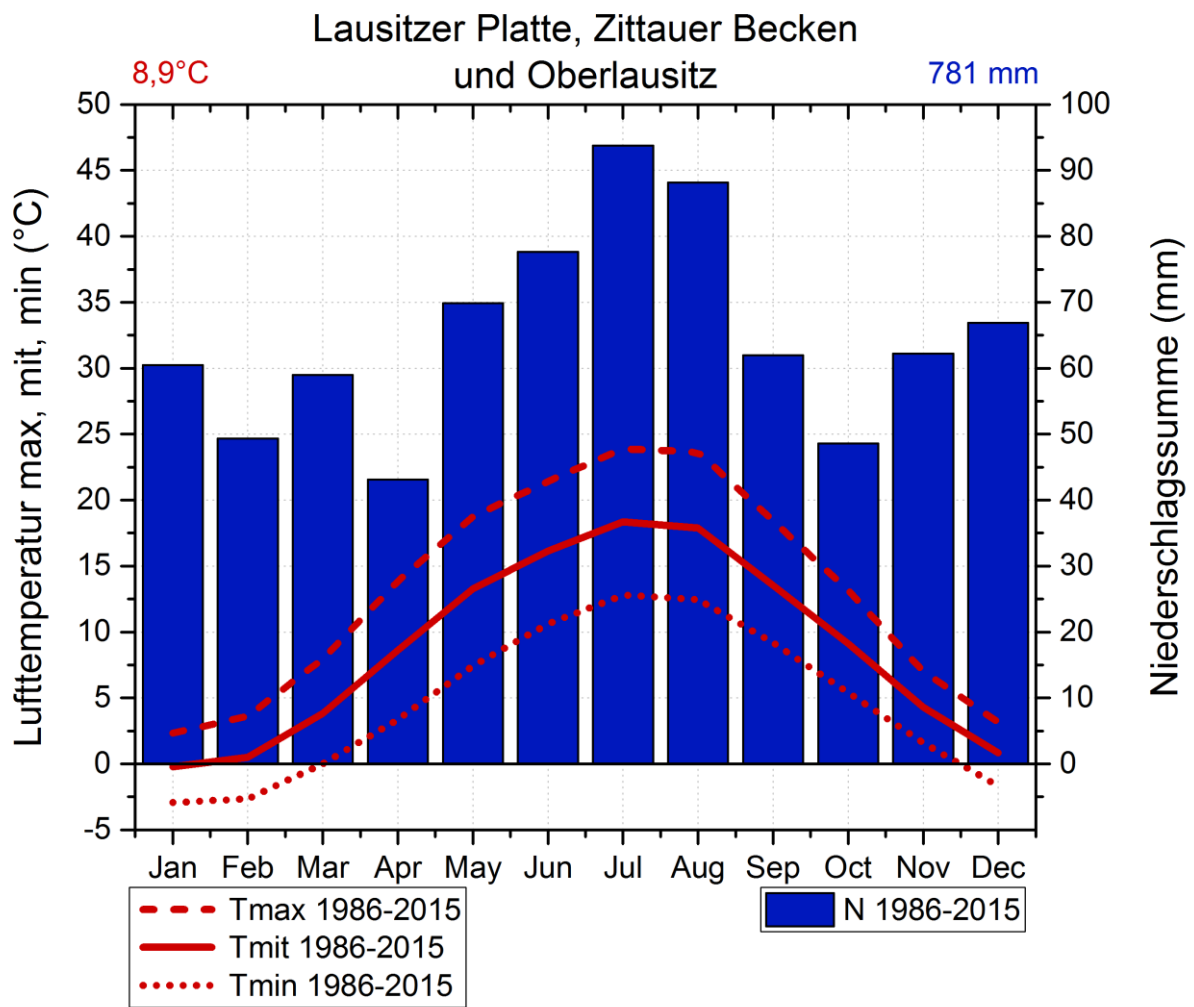




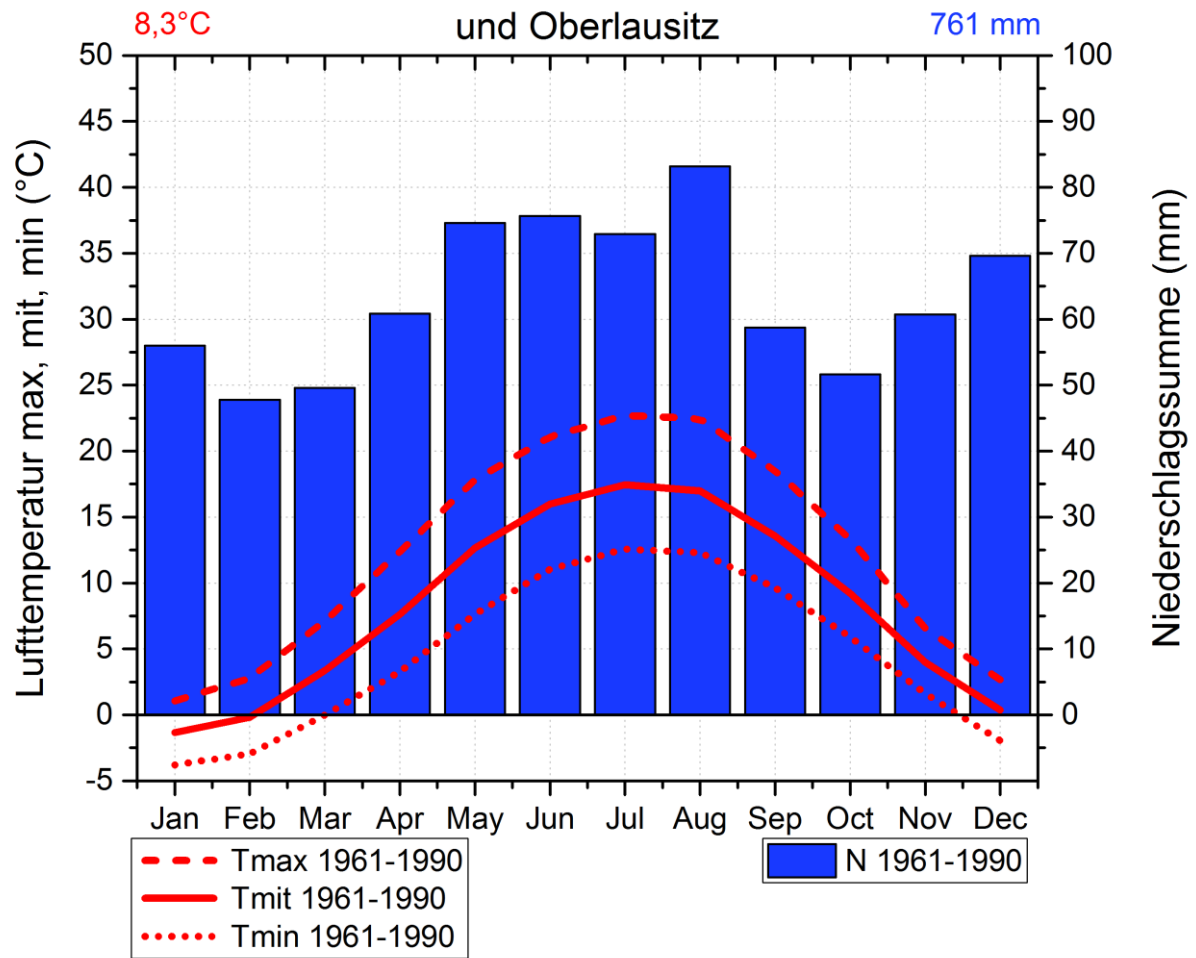


Änderung mittl. Temperatur, Niederschlag  
1986-2015 vs. 1961-1990  
Elbsandsteingebirge und  
Zittauer Gebirge

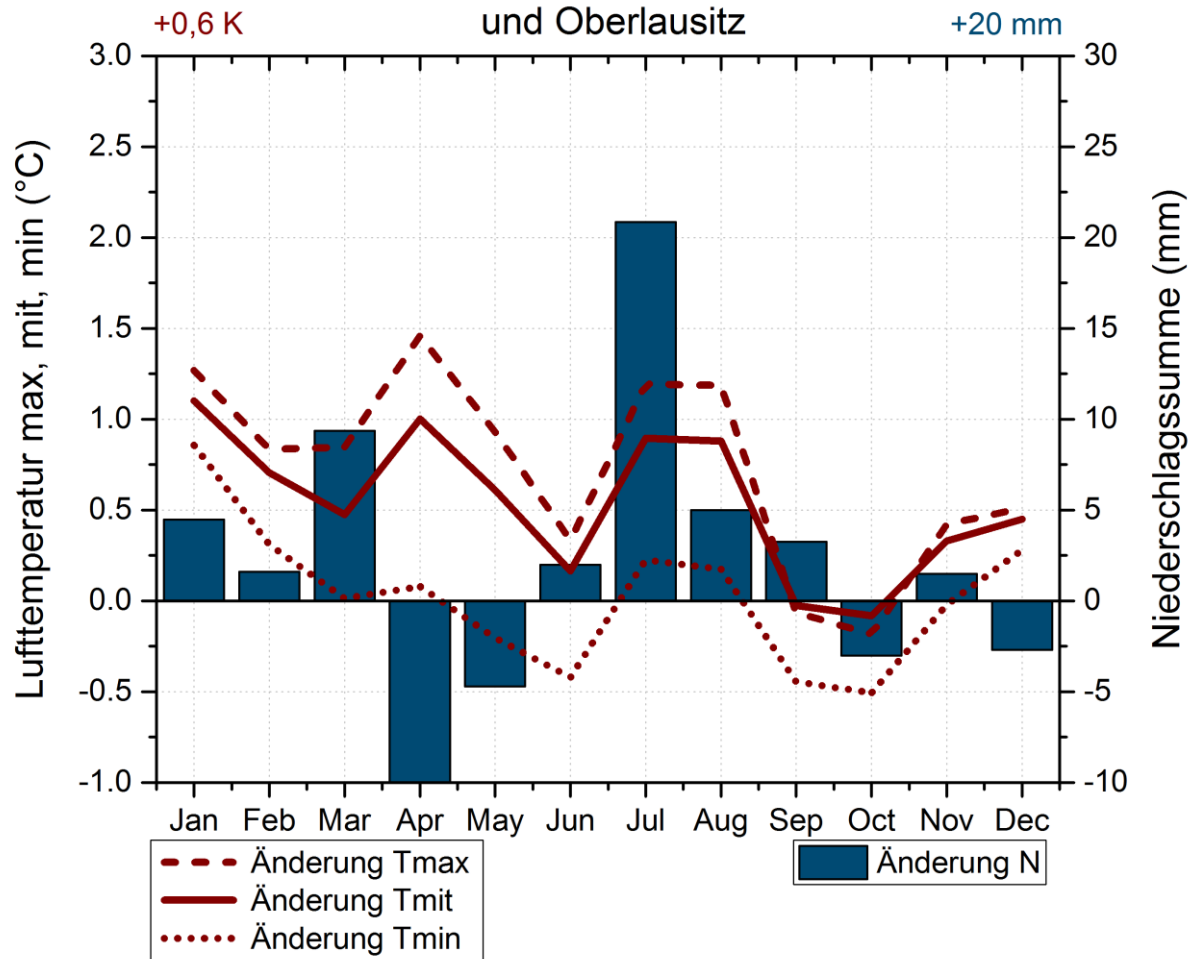


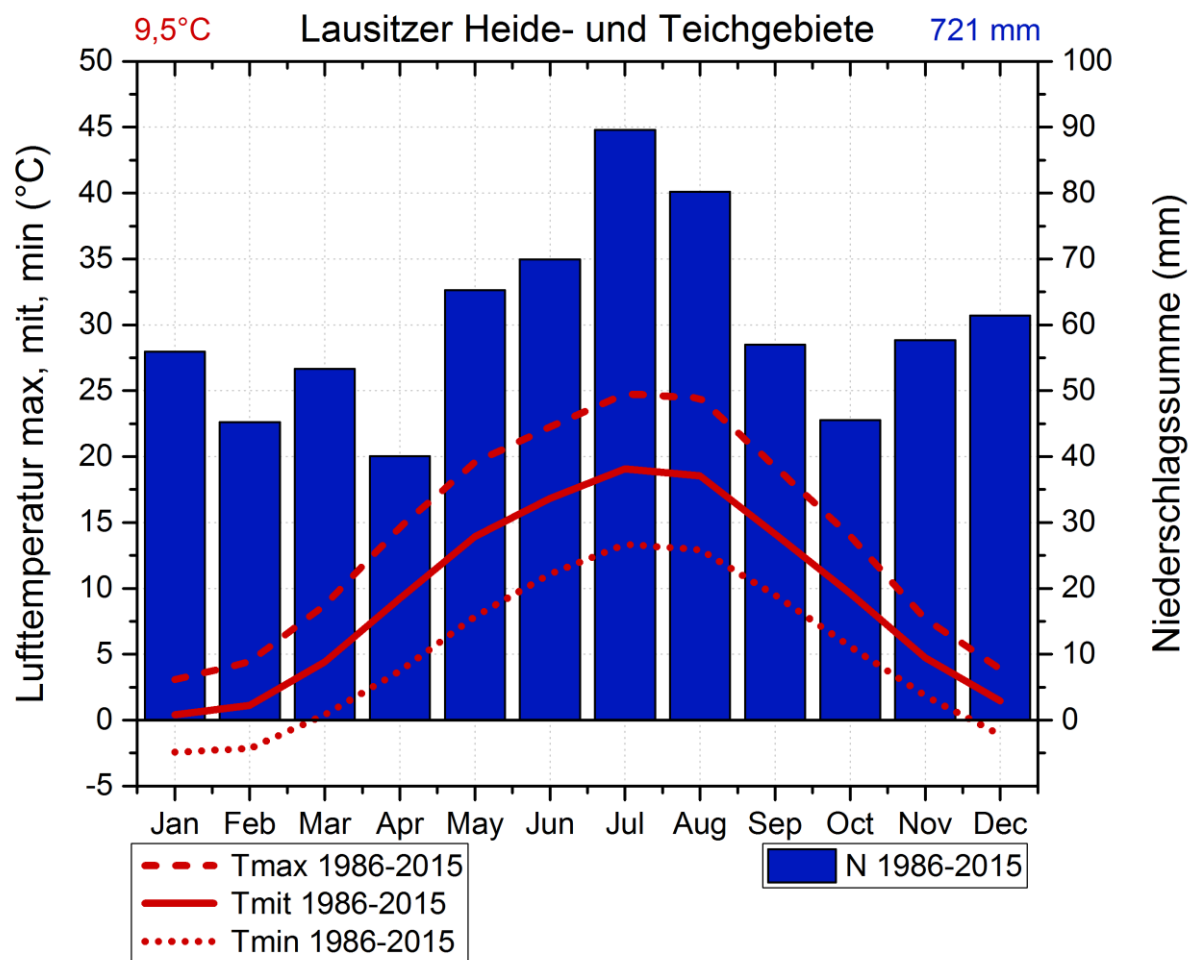


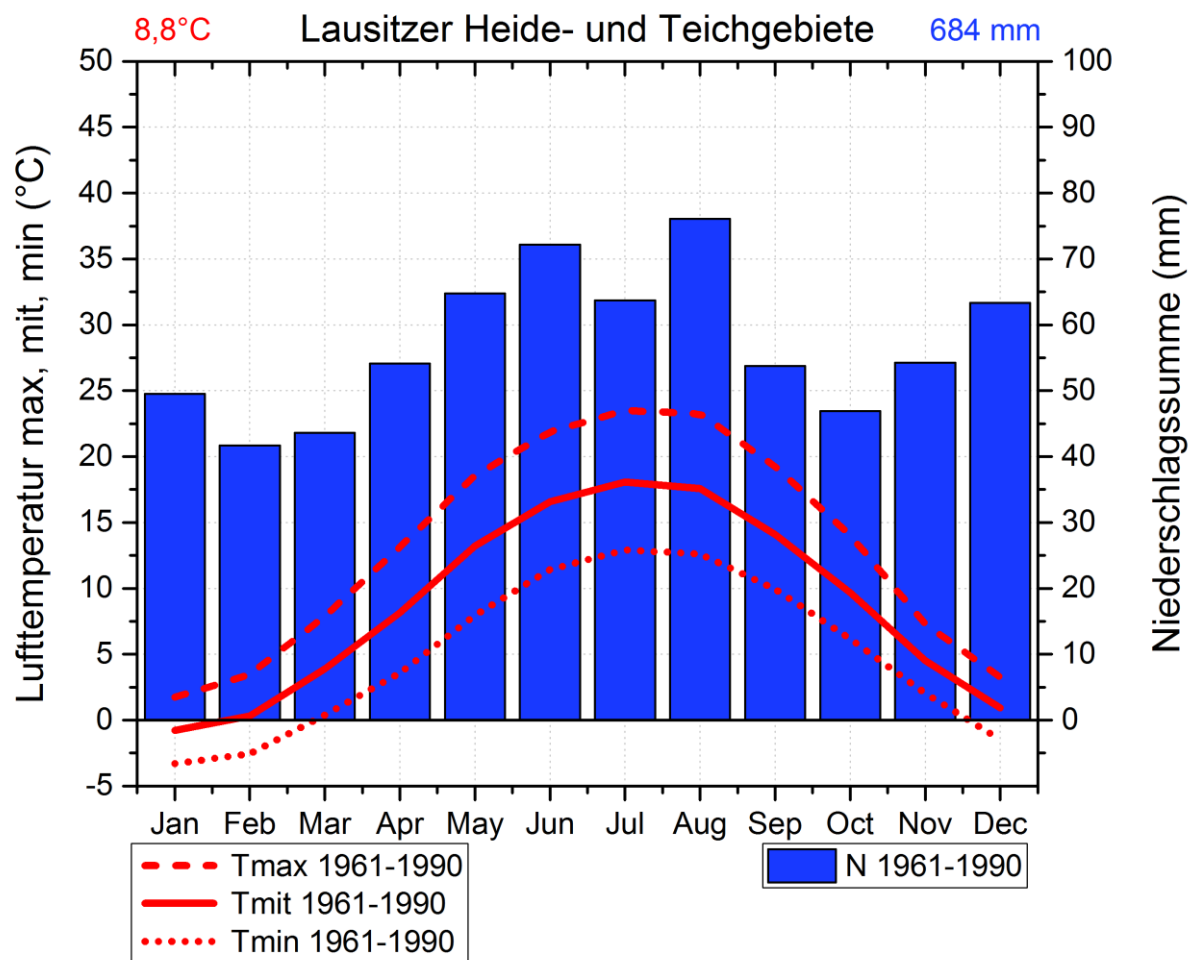
Lausitzer Platte, Zittauer Becken  
und Oberlausitz



Änderung mittl. Temperatur, Niederschlag  
1986-2015 vs. 1972-1990  
Lausitzer Platte, Zittauer Becken  
und Oberlausitz







Änderung mittl. Temperatur, Niederschlag  
1986-2015 vs. 1961-1990

